

CK7 Monoclonal Antibody(12D7)

Description

Product type	Primary Antibody
Code	BT-MCA0022
Host	Mouse
Isotype	IgG
Size	20ul, 50ul, 100ul
Immunogen	Synthetic Peptide of CK7
Mol wt	51418
Species reactivity	Human,Mouse,Rat
Clonality	Monoclonal
Recommended application	IF, ICC, WB, IHC-p, IP
Concentration	1 mg/ml
Full name	Keratin type II cytoskeletal 7
Synonyms	KRT7; SCL; Keratin; type II cytoskeletal 7; Cytokeratin-7; CK-7; Keratin-7; K7; Sarcolectin; Type-II keratin Kb7

This product is for research use only, not for use in human, therapeutic or diagnostic procedure.

Background

The protein encoded by this gene is a member of the keratin gene family. The type II cytokeratins consist of basic or neutral proteins which are arranged in pairs of heterotypic keratin chains coexpressed during differentiation of simple and stratified epithelial tissues. This type II cytokeratin is specifically expressed in the simple epithelia lining the cavities of the internal organs and in the gland ducts and blood vessels. The genes encoding the type II cytokeratins are clustered in a region of chromosome 12q12-q13. Alternative splicing may result in several transcript variants| however, not all variants have been fully described.

Recommended Dilution

IF: 1:50-200

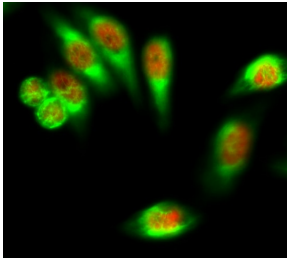
IHC: 1:200

IP: 1:200

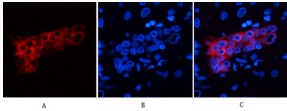
WB: 1:1000-2000

Not yet tested in other applications.

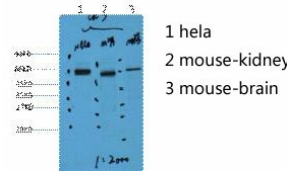
Images



Immunofluorescence analysis of HeLa cell. FoxO1 Polyclonal Antibody(red) was diluted at 1:200(4°C overnight). CK7 Monoclonal antibody(12D7)(green) was diluted at 1:200(4°C overnight).



Immunofluorescence analysis of human-liver tissue. 1.CK7 Monoclonal antibody(12D7)(red) was diluted at 1:200(4°C,overnight). 2. Cy3 labeled Secondary antibody was diluted at 1:300(room temperature, 50min).3. Picture B: DAPI(blue) 10min. Picture A:Target. Picture B: DAPI. Picture C: merge of A+B



Western blot analysis of 1) HeLa, 2) Mouse Kidney, 3) Mouse Brain diluted at 1:2000.

Storage

-20°C for one year

501 Changsheng S Rd, Nanhu Dist, Jiaxing, Zhejiang, China

Tel: 86 21 31007137 | E-mail: save@bt-laboratory.com | www.bt-laboratory.com