

CK8 Monoclonal Antibody(8G8)

Description

Product type	Primary Antibody
Code	BT-MCA0023
Host	Mouse
Isotype	IgG
Size	20ul, 50ul, 100ul
Immunogen	Synthetic Peptide of CK8
Mol wt	53573
Species reactivity	Human,Mouse,Rat
Clonality	Monoclonal
Recommended application	IF, ICC, WB, IHC-p
Concentration	1 mg/ml
Full name	Keratin type II cytoskeletal 8
Synonyms	KRT8; CYK8; Keratin; type II cytoskeletal 8; Cytokeratin-8; CK-8; Keratin-8; K8; Type-II keratin Kb8

This product is for research use only, not for use in human, therapeutic or diagnostic procedure.

Background

This gene is a member of the type II keratin family clustered on the long arm of chromosome 12. Type I and type II keratins heteropolymerize to form intermediate-sized filaments in the cytoplasm of epithelial cells. The product of this gene typically dimerizes with keratin 18 to form an intermediate filament in simple single-layered epithelial cells. This protein plays a role in maintaining cellular structural integrity and also functions in signal transduction and cellular differentiation. Mutations in this gene cause cryptogenic cirrhosis. Alternatively spliced transcript variants have been found for this gene.

Recommended Dilution

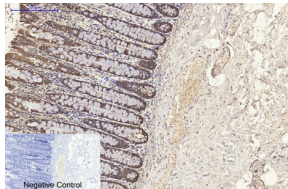
IF: 1:50-200

IHC: 1:200

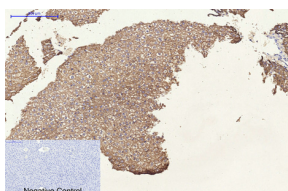
WB: 1:2000-5000

Not yet tested in other applications.

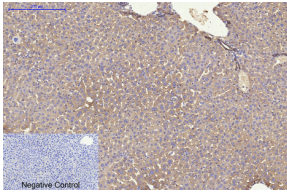
Images



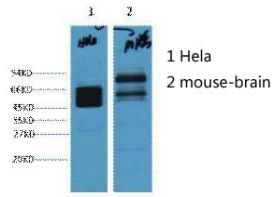
Immunohistochemical analysis of paraffin-embedded Human-colon tissue. 1.CK8 Monoclonal antibody(8G8) was diluted at 1:200(4°C,overnight). 2.Sodium citrate pH 6.0 was used for antibody retrieval(>98°C,20min). 3.Secondary antibody was diluted at 1:200(room temperature, 30min). Negative control was used by secondary antibody only.



Immunohistochemical analysis of paraffin-embedded Rat-liver tissue. 1.CK8 Monoclonal antibody(8G8) was diluted at 1:200(4°C,overnight). 2.Sodium citrate pH 6.0 was used for antibody retrieval(>98°C,20min). 3.Secondary antibody was diluted at 1:200(room temperature, 30min). Negative control was used by secondary antibody only.



Immunohistochemical analysis of paraffin-embedded Mouse-liver tissue. 1.CK8 Monoclonal antibody(8G8) was diluted at 1:200(4°C,overnight). 2.Sodium citrate pH 6.0 was used for antibody retrieval(>98°C,20min). 3.Secondary antibody was diluted at 1:200(room temperature, 30min). Negative control was used by secondary antibody only.



Western blot analysis of 1) HeLa, 2) Mouse Brain diluted at 1:4000.

Storage

-20°C for one year

501 Changsheng S Rd, Nanhu Dist, Jiaxing, Zhejiang, China

Tel: 86 21 31007137 | E-mail: save@bt-laboratory.com | www.bt-laboratory.com