

## Cleaved PARP Monoclonal Antibody(Mix)

### Description

Product type	Primary Antibody
Code	BT-MCA0024
Host	Mouse
Isotype	IgG
Size	20ul, 50ul, 100ul
Immunogen	Synthetic Peptide of Cleaved PARP
Mol wt	N/A
Species reactivity	Human
Clonality	Monoclonal
Recommended application	IF, ICC, WB, IHC-p
Concentration	1 mg/ml
Full name	Poly (ADP-ribose) polymerase 1
Synonyms	PARP1; ADPRT; PPOL; Poly [ADP-ribose] polymerase 1; PARP-1; ADP-ribosyltransferase diphtheria toxin-like 1; ARTD1; NAD(+) ADP-ribosyltransferase 1; ADPRT 1; Poly[ADP-ribose] synthase 1

This product is for research use only, not for use in human, therapeutic or diagnostic procedure.

### Background

This gene encodes a chromatin-associated enzyme, poly(ADP-ribosyl)transferase, which modifies various nuclear proteins by poly(ADP-ribosyl)ation. The modification is dependent on DNA and is involved in the regulation of various important cellular processes such as differentiation, proliferation, and tumor transformation and also in the regulation of the molecular events involved in the recovery of cell from DNA damage. In addition, this enzyme may be the site of mutation in Fanconi anemia, and may participate in the pathophysiology of type I diabetes.

### Recommended Dilution

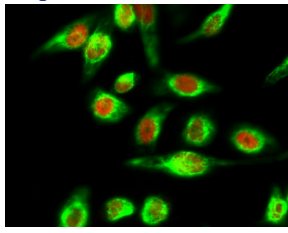
IF: 1:50-200

IHC: 1:50-300

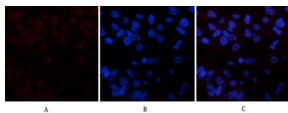
WB: 1:2000-5000

Not yet tested in other applications.

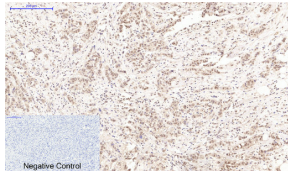
### Images



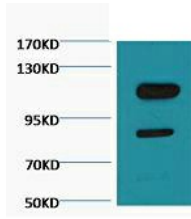
Immunofluorescence analysis of HeLa cell. BRCA1 Polyclonal Antibody(green) was diluted at 1:200(4°C overnight). (red) was diluted at 1:200(4°C overnight).



Immunofluorescence analysis of human-liver-cancer tissue. 1. Cleaved PARP Monoclonal antibody(Mix)(red) was diluted at 1:200(4°C, overnight). 2. Cy3 labeled Secondary antibody was diluted at 1:300(room temperature, 50min). 3. Picture B: DAPI(blue) 10min. Picture A: Target. Picture B: DAPI. Picture C: merge of A+B



Immunohistochemical analysis of paraffin-embedded Human-breast-cancer tissue. 1.Cleaved PARP Monoclonal antibody(Mix) was diluted at 1:200(4°C,overnight). 2.Sodium citrate pH 6.0 was used for antibody retrieval(>98°C,20min). 3.Secondary antibody was diluted at 1:200(room temperature, 30min). Negative control was used by secondary antibody only.



Western blot analysis of Jurkat diluted at 1:3000.

### Storage

-20°C for one year

501 Changsheng S Rd, Nanhu Dist, Jiaxing, Zhejiang, China

Tel: 86 21 31007137 | E-mail: [save@bt-laboratory.com](mailto:save@bt-laboratory.com) | [www.bt-laboratory.com](http://www.bt-laboratory.com)