

Collagen III Monoclonal Antibody(Q76)

Description

Product type	Primary Antibody
Code	BT-MCA0025
Host	Mouse
Isotype	IgG
Size	20ul, 50ul, 100ul
Immunogen	Synthetic Peptide of Collagen III
Mol wt	138564
Species reactivity	Human,Mouse,Rat
Clonality	Monoclonal
Recommended application	WB, IHC-p, IF, ICC
Concentration	1 mg/ml
Full name	Collagen alpha-1(III) chain
Synonyms	COL3A1; Collagen alpha-1(III) chain

This product is for research use only, not for use in human, therapeutic or diagnostic procedure.

Background

This gene encodes the pro-alpha chains of type III collagen, a fibrillar collagen that is found in extensible connective tissues such as skin, lung, uterus, intestine and the vascular system, frequently in association with type I collagen. Mutations in this gene are associated with Ehlers-Danlos syndrome types IV, and with aortic and arterial aneurysms. Two transcripts, resulting from the use of alternate polyadenylation signals, have been identified for this gene.

Recommended Dilution

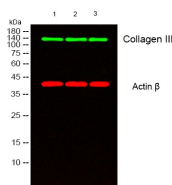
IF: 1:200

IHC: 1:50-300

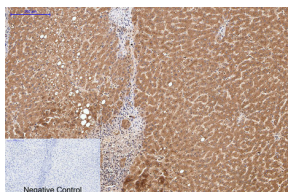
WB: 1:1000

Not yet tested in other applications.

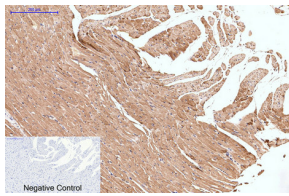
Images



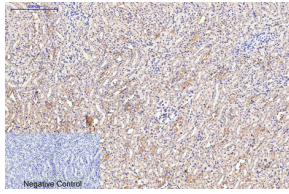
Western blot analysis of lysates from 1) MCF7 , 2) HeLa, 3) 293T cells, (Green) primary antibody was diluted at 1:1000, 4°overnight, secondary antibody was diluted at 1:10000, 37°C 1hour. (Red) Actin Beta Polyclonal Antibody antibody was diluted at 1:5000 as loading control, 4°C overnight,secondary antibody was diluted at 1:10000, 37°C 1hour.



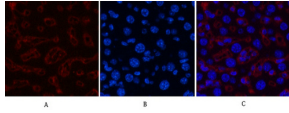
Immunohistochemical analysis of paraffin-embedded Human-liver tissue. 1.Collagen III Monoclonal antibody(Q76) was diluted at 1:200(4°C,overnight). 2.Sodium citrate pH 6.0 was used for antibody retrieval(>98°C,20min). 3.Secondary antibody was diluted at 1:200(room temperature, 30min). Negative control was used by secondary antibody only.



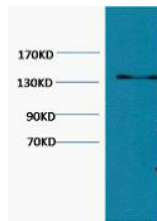
Immunohistochemical analysis of paraffin-embedded Rat-heart tissue. 1.Collagen III Monoclonal antibody(Q76) was diluted at 1:200(4°C,overnight). 2.Sodium citrate pH 6.0 was used for antibody retrieval(>98°C,20min). 3.Secondary antibody was diluted at 1:200(room temperature, 30min). Negative control was used by secondary antibody only.



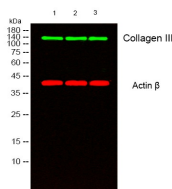
Immunohistochemical analysis of paraffin-embedded Mouse-kidney tissue. 1.Collagen III Monoclonal antibody(Q76) was diluted at 1:200(4°C,overnight). 2.Sodium citrate pH 6.0 was used for antibody retrieval(>98°C,20min). 3.Secondary antibody was diluted at 1:200(room temperature, 30min). Negative control was used by secondary antibody only.



Immunofluorescence analysis of Mouse-liver tissue. 1.Collagen III Monoclonal antibody(Q76)(red) was diluted at 1:200(4°C,overnight). 2. Cy3 labeled Secondary antibody was diluted at 1:300(room temperature, 50min).3. Picture B: DAPI(blue) 10min. Picture A:Target. Picture B: DAPI. Picture C: merge of A+B



Western blot analysis of Hela diluted at 1:1000.



Western blot analysis of lysates from 1) MCF7 , 2) Hela, 3) 293T cells, (Green) primary antibody was diluted at 1:1000, 4°overnight, secondary antibody was diluted at 1:10000, 37°C 1hour. (Red) Actin Beta Polyclonal Antibody antibody was diluted at 1:5000 as loading control, 4°C overnight,secondary antibody was diluted at 1:10000, 37°C 1hour.

Storage

-20°C for one year

501 Changsheng S Rd, Nanhu Dist, Jiaxing, Zhejiang, China

Tel: 86 21 31007137 | E-mail: save@bt-laboratory.com | www.bt-laboratory.com