

Cyclophilin B Monoclonal Antibody(2B10)

Description

Product type	Primary Antibody
Code	BT-MCA0027
Host	Mouse
Isotype	IgG
Size	20ul, 50ul, 100ul
Immunogen	Synthetic Peptide of Cyclophilin B
Mol wt	N/A
Species reactivity	Human,Rat,Mouse
Clonality	Monoclonal
Recommended application	IF, ICC, WB, IHC-p
Concentration	1 mg/ml
Full name	Peptidyl-prolyl cis-trans isomerase B
Synonyms	PPIB; CYPB; Peptidyl-prolyl cis-trans isomerase B; PPlase B; CYP-S1; Cyclophilin B; Rotamase B; S-cyclophilin; SCYLP

This product is for research use only, not for use in human, therapeutic or diagnostic procedure.

Background

The protein encoded by this gene is a cyclosporine-binding protein and is mainly located within the endoplasmic reticulum. It is associated with the secretory pathway and released in biological fluids. This protein can bind to cells derived from T- and B-lymphocytes, and may regulate cyclosporine A-mediated immunosuppression. Variants have been identified in this protein that give rise to recessive forms of osteogenesis imperfecta.

Recommended Dilution

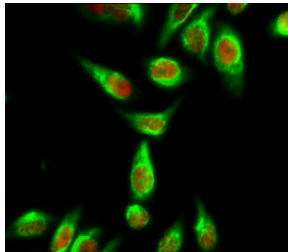
IF: 1:50-200

IHC: 1:50-300

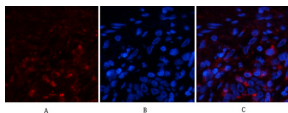
WB: 1:1000-2000

Not yet tested in other applications.

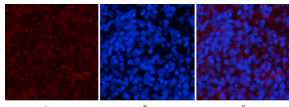
Images



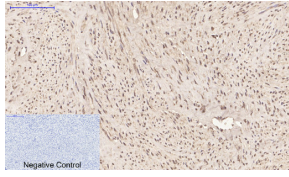
Immunofluorescence analysis of HeLa cell. Calmodulin Polyclonal Antibody(green) was diluted at 1:200(4°C overnight). (red) was diluted at 1:200(4°C overnight).



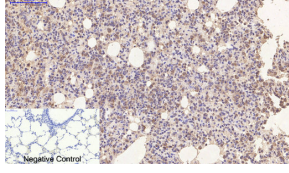
Immunofluorescence analysis of human-lung tissue. 1.Cyclophilin B Monoclonal antibody(2B10) (red) was diluted at 1:200(4°C,overnight). 2. Cy3 labeled Secondary antibody was diluted at 1:300(room temperature, 50min).3. Picture B: DAPI(blue) 10min. Picture A:Target. Picture B: DAPI. Picture C: merge of A+B



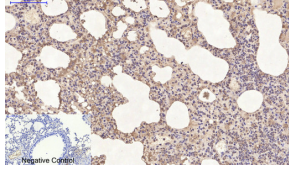
Immunofluorescence analysis of rat-spleen tissue. 1.Cyclophilin B Monoclonal antibody(2B10)(red) was diluted at 1:200(4°C,overnight). 2. Cy3 labeled Secondary antibody was diluted at 1:300(room temperature, 50min).3. Picture B: DAPI(blue) 10min. Picture A:Target. Picture B: DAPI. Picture C: merge of A+B



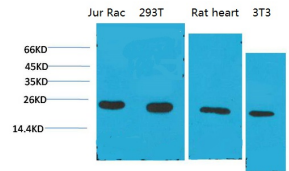
Immunohistochemical analysis of paraffin-embedded Human-uterus tissue. 1.Cyclophilin B Monoclonal antibody(2B10) was diluted at 1:200(4°C,overnight). 2.Sodium citrate pH 6.0 was used for antibody retrieval(>98°C,20min). 3.Secondary antibody was diluted at 1:200(room temperature, 30min). Negative control was used by secondary antibody only.



Immunohistochemical analysis of paraffin-embedded Rat-lung tissue. 1.Cyclophilin B Monoclonal antibody(2B10) was diluted at 1:200(4°C,overnight). 2.Sodium citrate pH 6.0 was used for antibody retrieval(>98°C,20min). 3.Secondary antibody was diluted at 1:200(room temperature, 30min). Negative control was used by secondary antibody only.



Immunohistochemical analysis of paraffin-embedded Mouse-lung tissue. 1.Cyclophilin B Monoclonal antibody(2B10) was diluted at 1:200(4°C,overnight). 2.Sodium citrate pH 6.0 was used for antibody retrieval(>98°C,20min). 3.Secondary antibody was diluted at 1:200(room temperature, 30min). Negative control was used by secondary antibody only.



Western blot analysis of 1) Jurkat, 2)293T, 3)Rat Liver Tissue, 4)3T3 with Cyclophilin B Mouse Monoclonal antibody diluted at 1:2.000.

Storage

-20°C for one year

501 Changsheng S Rd, Nanhu Dist, Jiaxing, Zhejiang, China

Tel: 86 21 31007137 | E-mail: save@bt-laboratory.com | www.bt-laboratory.com