

## CYCS Monoclonal Antibody(4B10)

### Description

<b>Product type</b>	Primary Antibody
<b>Code</b>	BT-MCA0028
<b>Host</b>	Mouse
<b>Isotype</b>	IgG
<b>Size</b>	20ul, 50ul, 100ul
<b>Immunogen</b>	Recombinant Protein of CYCS
<b>Mol wt</b>	N/A
<b>Species reactivity</b>	Human,Mouse,Rat,Chicken
<b>Clonality</b>	Monoclonal
<b>Recommended application</b>	WB, IF, ICC, IHC-p
<b>Concentration</b>	1 mg/ml
<b>Full name</b>	Cytochrome c
<b>Synonyms</b>	CYCS; CYC; Cytochrome c

This product is for research use only, not for use in human, therapeutic or diagnostic procedure.

### Background

This gene encodes a small heme protein that functions as a central component of the electron transport chain in mitochondria. The encoded protein associates with the inner membrane of the mitochondrion where it accepts electrons from cytochrome b and transfers them to the cytochrome oxidase complex. This protein is also involved in initiation of apoptosis. Mutations in this gene are associated with autosomal dominant nonsyndromic thrombocytopenia. Numerous processed pseudogenes of this gene are found throughout the human genome.

### Recommended Dilution

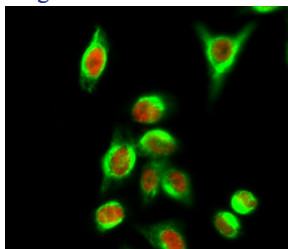
IF: 1:200

IHC: 1:500-1000

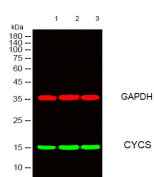
WB: 1:1000-5000

Not yet tested in other applications.

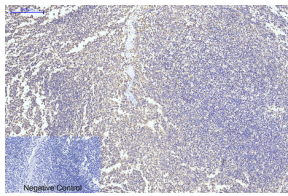
### Images



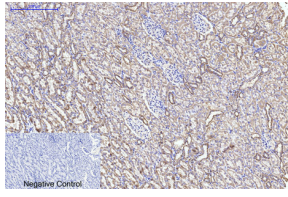
Immunofluorescence analysis of HeLa cell. c-Myc Polyclonal Antibody(red) was diluted at 1:200(4°C overnight). CYCS Monoclonal antibody(4B10)(green) was diluted at 1:200(4°C overnight).



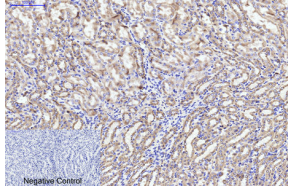
Western blot analysis of lysates from 1) HeLa, 2) 293T, 3) 3T3. cells, (Green) primary antibody was diluted at 1:1000, 4°C overnight, secondary antibody was diluted at 1:10000, 37°C 1hour. (Red) GAPDH Polyclonal Antibody antibody was diluted at 1:5000 as loading control, 4°C overnight, secondary antibody was diluted at 1:10000, 37°C 1hour.



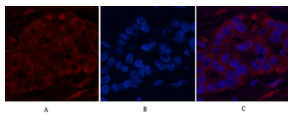
Immunohistochemical analysis of paraffin-embedded Human-Tonsil tissue. 1.CYCS Monoclonal antibody(4B10) was diluted at 1:200(4°C,overnight). 2.Sodium citrate pH 6.0 was used for antibody retrieval(>98°C,20min). 3.Secondary antibody was diluted at 1:200(room temperature, 30min). Negative control was used by secondary antibody only.



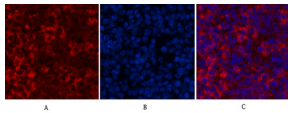
Immunohistochemical analysis of paraffin-embedded Rat-kidney tissue. 1.CYCS Monoclonal antibody(4B10) was diluted at 1:200(4°C,overnight). 2.Sodium citrate pH 6.0 was used for antibody retrieval(>98°C,20min). 3.Secondary antibody was diluted at 1:200(room temperature, 30min). Negative control was used by secondary antibody only.



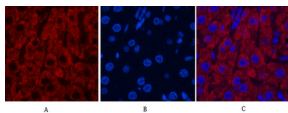
Immunohistochemical analysis of paraffin-embedded Mouse-kidney tissue. 1.CYCS Monoclonal antibody(4B10) was diluted at 1:200(4°C,overnight). 2.Sodium citrate pH 6.0 was used for antibody retrieval(>98°C,20min). 3.Secondary antibody was diluted at 1:200(room temperature, 30min). Negative control was used by secondary antibody only.



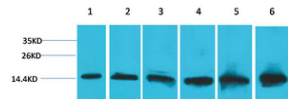
Immunofluorescence analysis of Human-liver-cancer tissue. 1.CYCS Monoclonal antibody(4B10) (red) was diluted at 1:200(4°C,overnight). 2. Cy3 labeled Secondary antibody was diluted at 1:300(room temperature, 50min).3. Picture B: DAPI(blue) 10min. Picture A:Target. Picture B: DAPI. Picture C: merge of A+B



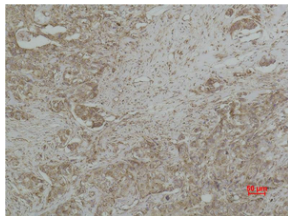
Immunofluorescence analysis of Mouse-spleen tissue. 1.CYCS Monoclonal antibody(4B10)(red) was diluted at 1:200(4°C,overnight). 2. Cy3 labeled Secondary antibody was diluted at 1:300(room temperature, 50min).3. Picture B: DAPI(blue) 10min. Picture A:Target. Picture B: DAPI. Picture C: merge of A+B



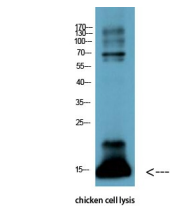
Immunofluorescence analysis of Rat-liver tissue. 1.CYCS Monoclonal antibody(4B10)(red) was diluted at 1:200(4°C,overnight). 2. Cy3 labeled Secondary antibody was diluted at 1:300(room temperature, 50min).3. Picture B: DAPI(blue) 10min. Picture A:Target. Picture B: DAPI. Picture C: merge of A+B



Western blot analysis of 1) HeLa, 2) 293T, 3) 3T3. 4) Mouse Liver Tissue, 5) Rat Liver Tissue, 6) Rat Kidney Tissue using CYCS Monoclonal antibody.



Immunohistochemical analysis of paraffin-embedded human Breast carcinoma using CYCS Monoclonal antibody.



Western Blot analysis of chicken cell lysis using Antibody diluted at 1:1000.

## Storage

-20°C for one year

501 Changsheng S Rd, Nanhu Dist, Jiaxing, Zhejiang, China

Tel: 86 21 31007137 | E-mail: save@bt-laboratory.com | www.bt-laboratory.com