

EFHD1 Monoclonal Antibody(3G2)

Description

Product type	Primary Antibody
Code	BT-MCA0032
Host	Mouse
Isotype	IgG
Size	20ul, 50ul, 100ul
Immunogen	Synthetic Peptide of EFHD1
Mol wt	N/A
Species reactivity	Human,Mouse,Rat
Clonality	Monoclonal
Recommended application	WB, IHC-p, IF, ICC
Concentration	1 mg/ml
Full name	EF-hand domain-containing protein D1
Synonyms	EF-hand domain-containing protein D1 (EF-hand domain-containing protein 1) (Swiprosin-2)

This product is for research use only, not for use in human, therapeutic or diagnostic procedure.

Background

This gene encodes a member of the EF-hand super family of calcium binding proteins, which are involved in a variety of cellular processes including mitosis, synaptic transmission, and cytoskeletal rearrangement. The protein encoded by this gene is composed of an N-terminal disordered region, proline-rich elements, two EF-hands, and a C-terminal coiled-coil domain. This protein has been shown to associate with the mitochondrial inner membrane, and in HeLa cells, acts as a novel mitochondrial calcium ion sensor for mitochondrial flash activation. Alternative splicing results in multiple transcript variants.

Recommended Dilution

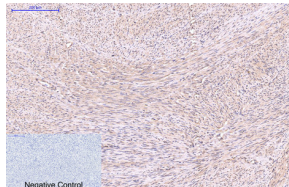
IF: 1:100-200

IHC: 1:50-300

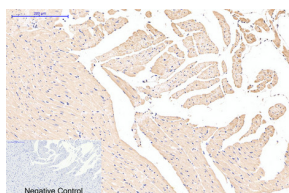
WB: 1:2000

Not yet tested in other applications.

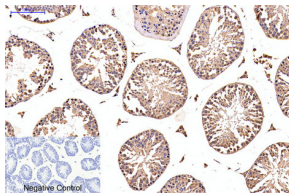
Images



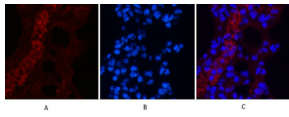
Immunohistochemical analysis of paraffin-embedded Human-uterus tissue. 1.EFHD1 Monoclonal antibody(3G2) was diluted at 1:200(4°C,overnight). 2.Sodium citrate pH 6.0 was used for antibody retrieval(>98°C,20min). 3.Secondary antibody was diluted at 1:200(room temperature, 30min). Negative control was used by secondary antibody only.



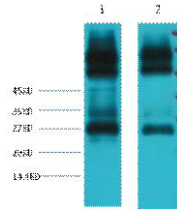
Immunohistochemical analysis of paraffin-embedded Rat-heart tissue. 1.EFHD1 Monoclonal antibody(3G2) was diluted at 1:200(4°C,overnight). 2.Sodium citrate pH 6.0 was used for antibody retrieval(>98°C,20min). 3.Secondary antibody was diluted at 1:200(room temperature, 30min). Negative control was used by secondary antibody only.



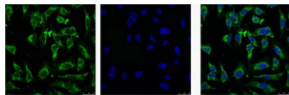
Immunohistochemical analysis of paraffin-embedded Mouse-testis tissue. 1.EFHD1 Monoclonal antibody(3G2) was diluted at 1:200(4°C,overnight). 2.Sodium citrate pH 6.0 was used for antibody retrieval(>98°C,20min). 3.Secondary antibody was diluted at 1:200(room temperature, 30min). Negative control was used by secondary antibody only.



Immunofluorescence analysis of Mouse-lung tissue. 1.EFHD1 Monoclonal antibody(3G2)(red) was diluted at 1:200(4°C,overnight). 2. Cy3 labeled Secondary antibody was diluted at 1:300(room temperature, 50min).3. Picture B: DAPI(blue) 10min. Picture A:Target. Picture B: DAPI. Picture C: merge of A+B



Western blot analysis of 1) Mouse spleen tissue, 2) Rat spleen tissue diluted at 1:3000.



IF analysis of HeLa with antibody (Left) and DAPI (Right) diluted at 1:100.

Storage

-20°C for one year

501 Changsheng S Rd, Nanhu Dist, Jiaxing, Zhejiang, China

Tel: 86 21 31007137 | E-mail: save@bt-laboratory.com | www.bt-laboratory.com