

HP-1 Gamma mouse Monoclonal Antibody(2F5)

Description

Product type	Primary Antibody
Code	BT-MCA0051
Host	Mouse
Isotype	IgG
Size	20ul, 50ul, 100ul
Immunogen	Recombinant Protein of HP-1 γ
Mol wt	N/A
Species reactivity	Human,Mouse,Rat
Clonality	Monoclonal
Recommended application	IF, ICC, WB, IHC-p
Concentration	1 mg/ml
Full name	Chromobox protein homolog 3
Synonyms	Chromobox protein homolog 3; HECH; Heterochromatin protein 1 homolog gamma; HP1 gamma; Modifier 2 protein

This product is for research use only, not for use in human, therapeutic or diagnostic procedure.

Background

At the nuclear envelope, the nuclear lamina and heterochromatin are adjacent to the inner nuclear membrane. The protein encoded by this gene binds DNA and is a component of heterochromatin. This protein also can bind lamin B receptor, an integral membrane protein found in the inner nuclear membrane. The dual binding functions of the encoded protein may explain the association of heterochromatin with the inner nuclear membrane. This protein binds histone H3 tails methylated at Lys-9 sites. This protein is also recruited to sites of ultraviolet-induced DNA damage and double-strand breaks. Two transcript variants encoding the same protein but differing in the 5' UTR, have been found for this gene.

Recommended Dilution

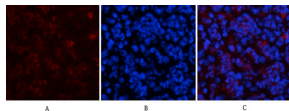
IF: 1:50-200

IHC-p: 1:50-300

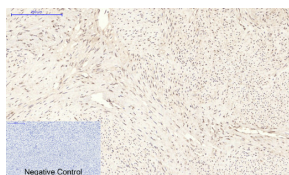
WB: 1:500-2000

Not yet tested in other applications.

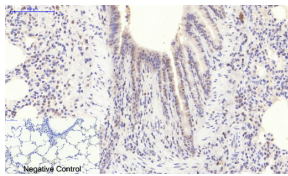
Images



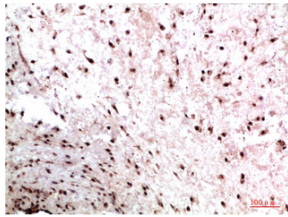
Immunofluorescence analysis of mouse-spleen tissue. 1. HP-1 Gamma Mouse Monoclonal antibody(2F5)(red) was diluted at 1:200(4°C, overnight). 2. Cy3 labeled Secondary antibody was diluted at 1:300(room temperature, 50min). 3. Picture B: DAPI(blue) 10min. Picture A: Target. Picture B: DAPI. Picture C: merge of A+B



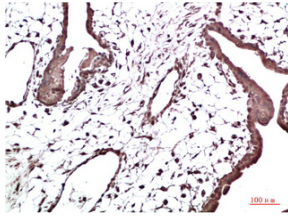
Immunohistochemical analysis of paraffin-embedded Human-uterus tissue. 1. HP-1 Gamma Mouse Monoclonal antibody(2F5) was diluted at 1:200(4°C, overnight). 2. Sodium citrate pH 6.0 was used for antibody retrieval(>98°C, 20min). 3. Secondary antibody was diluted at 1:200(room temperature, 30min). Negative control was used by secondary antibody only.



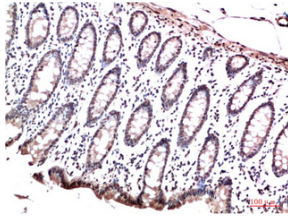
Immunohistochemical analysis of paraffin-embedded Rat-lung tissue. 1.HP-1Gamma Mouse Monoclonal antibody(2F5) was diluted at 1:200(4°C,overnight). 2.Sodium citrate pH 6.0 was used for antibody retrieval(>98°C,20min). 3.Secondary antibody was diluted at 1:200(room temperature, 30min). Negative control was used by secondary antibody only.



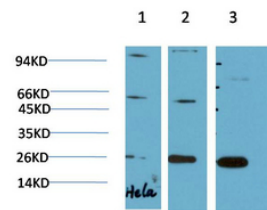
Immunohistochemical analysis of paraffin-embedded Human Colon Carcinoma Tissue using HP-1Gamma Mouse Monoclonal antibody diluted at 1:200



Immunohistochemical analysis of paraffin-embedded Human Placenta Tissue using HP-1Gamma Mouse Monoclonal antibody diluted at 1:200



Immunohistochemical analysis of paraffin-embedded Human Colon Carcinoma Tissue using HP-1Gamma Mouse Monoclonal antibody diluted at 1:200



Western blot analysis of 1) Hela Cell Lysate, 2)3T3 Cell Lysate, 3) PC12 Cell Lysate using HP-1Gamma Mouse Monoclonal antibody diluted at 1:1000.

Storage

-20°C for one year

501 Changsheng S Rd, Nanhu Dist, Jiaxing, Zhejiang, China

Tel: 86 21 31007137 | E-mail: save@bt-laboratory.com | www.bt-laboratory.com