

## HSP70 Monoclonal Antibody(3G10)

### Description

<b>Product type</b>	Primary Antibody
<b>Code</b>	BT-MCA0052
<b>Host</b>	Mouse
<b>Isotype</b>	IgG
<b>Size</b>	20ul, 50ul, 100ul
<b>Immunogen</b>	Synthetic Peptide of HSP70
<b>Mol wt</b>	70375/70052
<b>Species reactivity</b>	Human,Mouse,Rat
<b>Clonality</b>	Monoclonal
<b>Recommended application</b>	WB, IHC-p, IF, ICC
<b>Concentration</b>	1 mg/ml
<b>Full name</b>	Heat shock 70 kDa protein 1-like
<b>Synonyms</b>	HS71L; HSPA1L; HSPA1A

This product is for research use only, not for use in human, therapeutic or diagnostic procedure.

### Background

This gene encodes a 70kDa heat shock protein. In conjunction with other heat shock proteins, this protein stabilizes existing proteins against aggregation and mediates the folding of newly translated proteins in the cytosol and in organelles. The gene is located in the major histocompatibility complex class III region, in a cluster with two closely related genes which also encode isoforms of the 70kDa heat shock protein.

### Recommended Dilution

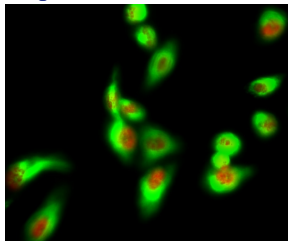
IF: 1:100-200

IHC: 1:50-300

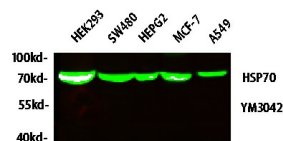
WB: 1:1000-2000

Not yet tested in other applications.

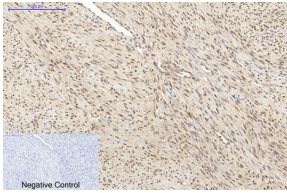
### Images



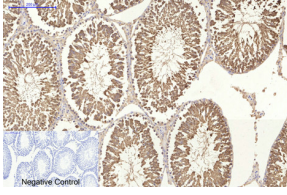
Immunofluorescence analysis of HeLa cell. AIM2 Polyclonal Antibody(red) was diluted at 1:200(4°C overnight). HSP70 Monoclonal antibody(3G10)(green) was diluted at 1:200(4°C overnight).



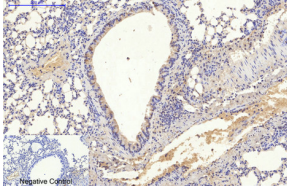
Western blot analysis of lysates from HT-29, NIH/3T3, and HepG2 cells, primary antibody was diluted at 1:1000, 4°C overnight, secondary antibody was diluted at 1:10000, 37°C 1hour.



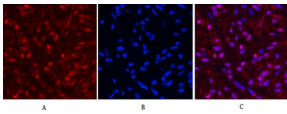
Immunohistochemical analysis of paraffin-embedded Human-uterus-cancer tissue. 1.HSP70 Monoclonal antibody(3G10) was diluted at 1:200(4°C,overnight). 2.Sodium citrate pH 6.0 was used for antibody retrieval(>98°C,20min). 3.Secondary antibody was diluted at 1:200(room temperature, 30min). Negative control was used by secondary antibody only.



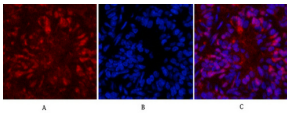
Immunohistochemical analysis of paraffin-embedded Rat-testis tissue. 1.HSP70 Monoclonal antibody(3G10) was diluted at 1:200(4°C,overnight). 2.Sodium citrate pH 6.0 was used for antibody retrieval(>98°C,20min). 3.Secondary antibody was diluted at 1:200(room temperature, 30min). Negative control was used by secondary antibody only.



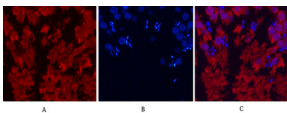
Immunohistochemical analysis of paraffin-embedded Mouse-lung tissue. 1.HSP70 Monoclonal antibody(3G10) was diluted at 1:200(4°C,overnight). 2.Sodium citrate pH 6.0 was used for antibody retrieval(>98°C,20min). 3.Secondary antibody was diluted at 1:200(room temperature, 30min). Negative control was used by secondary antibody only.



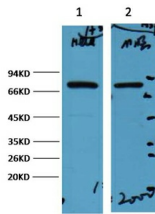
Immunofluorescence analysis of Human-breast-cancer tissue. 1.HSP70 Monoclonal antibody(3G10) (red) was diluted at 1:200(4°C,overnight). 2. Cy3 labeled Secondary antibody was diluted at 1:300(room temperature, 50min).3. Picture B: DAPI(blue) 10min. Picture A:Target. Picture B: DAPI. Picture C: merge of A+B



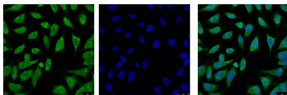
Immunofluorescence analysis of Mouse-lung tissue. 1.HSP70 Monoclonal antibody(3G10)(red) was diluted at 1:200(4°C,overnight). 2. Cy3 labeled Secondary antibody was diluted at 1:300(room temperature, 50min).3. Picture B: DAPI(blue) 10min. Picture A:Target. Picture B: DAPI. Picture C: merge of A+B



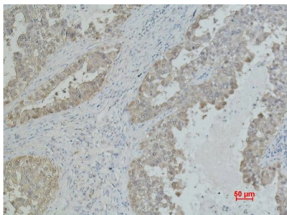
Immunofluorescence analysis of Rat-testis tissue. 1.HSP70 Monoclonal antibody(3G10)(red) was diluted at 1:200(4°C,overnight). 2. Cy3 labeled Secondary antibody was diluted at 1:300(room temperature, 50min).3. Picture B: DAPI(blue) 10min. Picture A:Target. Picture B: DAPI. Picture C: merge of A+B



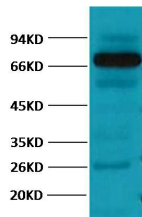
Western blot analysis of 1) HeLa, 2) Mouse Brain diluted at 1:2000.



IF analysis of HeLa with antibody (Left) and DAPI (Right) diluted at 1:100.



Immunohistochemical analysis of paraffin-embedded Human Lung carcinoma using Mouse Monoclonal antibody diluted at 1:500.



Western blot analysis of Pig Skeletal Muscle with HSP70 Monoclonal antibody diluted at 1:2.000.

## Storage

-20°C for one year

501 Changsheng S Rd, Nanhu Dist, Jiaxing, Zhejiang, China

Tel: 86 21 31007137 | E-mail: [save@bt-laboratory.com](mailto:save@bt-laboratory.com) | [www.bt-laboratory.com](http://www.bt-laboratory.com)