

Lamin B1 Monoclonal Antibody(7C11)

Description

Product type	Primary Antibody
Code	BT-MCA0057
Host	Mouse
Isotype	IgG
Size	20ul, 50ul, 100ul
Immunogen	Recombinant Protein of Lamin-B1
Mol wt	66408
Species reactivity	Human,Rat,Mouse
Clonality	Monoclonal
Recommended application	WB, IHC-p, IF, ICC, IP
Concentration	1 mg/ml
Full name	Lamin-B1
Synonyms	LMNB1; LMN2; LMNB; Lamin-B1

This product is for research use only, not for use in human, therapeutic or diagnostic procedure.

Background

This gene encodes one of the two B-type lamin proteins and is a component of the nuclear lamina. A duplication of this gene is associated with autosomal dominant adult-onset leukodystrophy (ADLD). Alternative splicing results in multiple transcript variants.

Recommended Dilution

IF: 1:200

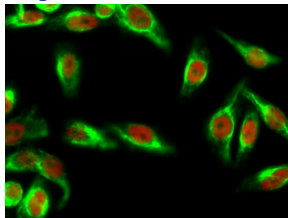
IHC: 1:50-300

IP: 1:200

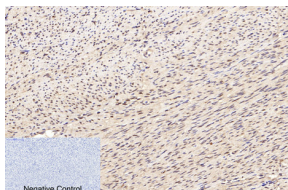
WB: 1:2000-5000

Not yet tested in other applications.

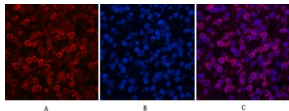
Images



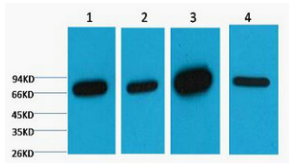
Immunofluorescence analysis of HeLa cell. AMPKAlpha1/2 (phospho Thr183/172) Polyclonal Antibody(green) was diluted at 1:200(4°C overnight). (red) was diluted at 1:200(4°C overnight).



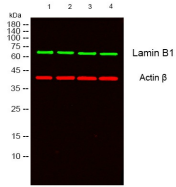
Immunohistochemical analysis of paraffin-embedded Human-uterus tissue. 1.Lamin B1 Monoclonal antibody(7C11) was diluted at 1:200(4°C,overnight). 2.Sodium citrate pH 6.0 was used for antibody retrieval(>98°C,20min). 3.Secondary antibody was diluted at 1:200(room temperature, 30min). Negative control was used by secondary antibody only.



Immunofluorescence analysis of Human-lung-cancer tissue. 1.Lamin B1 Monoclonal antibody(7C11) (red) was diluted at 1:200(4°C,overnight). 2. Cy3 labeled Secondary antibody was diluted at 1:300(room temperature, 50min).3. Picture B: DAPI(blue) 10min. Picture A:Target. Picture B: DAPI. Picture C: merge of A+B



Western blot analysis of 1) HepG2, 2) 293T, 3) Mouse Brain Tissue, 4) Rat Brain Tissue diluted at 1:5000.



Western blot analysis of lysates from 1) HepG2, 2) 293T, 3) Mouse Brain Tissue, 4)Rat Brain Tissue cells, (Green) primary antibody was diluted at 1:1000, 4°overnight, secondary antibody was diluted at 1:10000, 37°C 1hour. (Red) Actin Beta Polyclonal Antibody antibody was diluted at 1:5000 as loading control, 4°C overnight,secondary antibody was diluted at 1:10000, 37°C 1hour.

Storage

-20°C for one year

501 Changsheng S Rd, Nanhu Dist, Jiaxing, Zhejiang, China

Tel: 86 21 31007137 | E-mail: save@bt-laboratory.com | www.bt-laboratory.com