

LC3A mouse Monoclonal Antibody(5G10)

Description

Product type	Primary Antibody
Code	BT-MCA0058
Host	Mouse
Isotype	IgG
Size	20ul, 50ul, 100ul
Immunogen	Synthetic Peptide of LC3A
Mol wt	N/A
Species reactivity	Human,Rat,Mouse
Clonality	Monoclonal
Recommended application	WB, IF, ICC, IHC-p
Concentration	1 mg/ml
Full name	LC3A
Synonyms	Microtubule-associated proteins 1A; 1B light chain 3A; Autophagy-related protein LC3 A; Autophagy-related ubiquitin-like modifier LC3 A; MAP1 light chain 3-like protein 1; MAP1A; MAP1B light chain 3 A; MAP1A; MAP1B LC3 A; Microtubule-associated protein 1 light chain 3 alpha

This product is for research use only, not for use in human, therapeutic or diagnostic procedure.

Background

MAP1A and MAP1B are microtubule-associated proteins which mediate the physical interactions between microtubules and components of the cytoskeleton. MAP1A and MAP1B each consist of a heavy chain subunit and multiple light chain subunits. The protein encoded by this gene is one of the light chain subunits and can associate with either MAP1A or MAP1B. Two transcript variants encoding different isoforms have been found for this gene. The expression of variant 1 is suppressed in many tumor cell lines, suggesting that may be involved in carcinogenesis.

Recommended Dilution

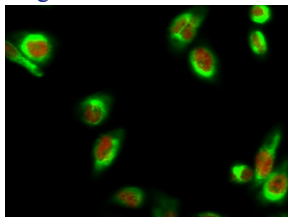
IF: 1:200

IHC: 1:100-200

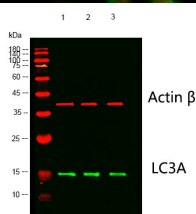
WB: 1:1000-2000

Not yet tested in other applications.

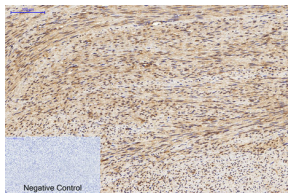
Images



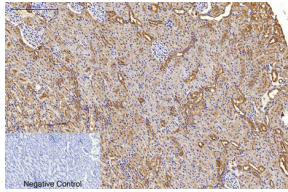
Immunofluorescence analysis of HeLa cell. CREB-1 Polyclonal Antibody(red) was diluted at 1:200(4°C overnight). LC3A mouse Monoclonal antibody(5G10)(green) was diluted at 1:200(4°C overnight).



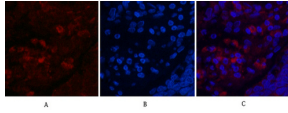
Western blot analysis of lysates from 1) HeLa Cell Lysate, 2) 3T3 Cell Lysate, 3) Rat Brain Tissue cells, (Green) primary antibody was diluted at 1:1000, 4°C overnight, Dylight 800 secondary antibody was diluted at 1:10000, 37°C 1hour. (Red) Actin Beta Polyclonal Antibody antibody was diluted at 1:5000 as loading control, 4°C overnight, Dylight 680 secondary antibody was diluted at 1:10000, 37°C 1hour.



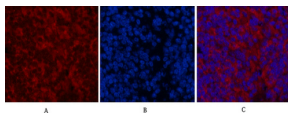
Immunohistochemical analysis of paraffin-embedded Human-uterus tissue. 1.LC3A Mouse Monoclonal antibody(5G10) was diluted at 1:200(4°C,overnight). 2.Sodium citrate pH 6.0 was used for antibody retrieval(>98°C,20min). 3.Secondary antibody was diluted at 1:200(room temperature, 30min). Negative control was used by secondary antibody only.



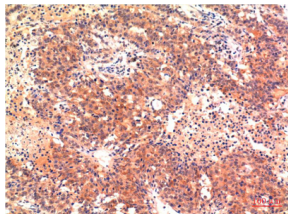
Immunohistochemical analysis of paraffin-embedded Rat-kidney tissue. 1.LC3A Mouse Monoclonal antibody(5G10) was diluted at 1:200(4°C,overnight). 2.Sodium citrate pH 6.0 was used for antibody retrieval(>98°C,20min). 3.Secondary antibody was diluted at 1:200(room temperature, 30min). Negative control was used by secondary antibody only.



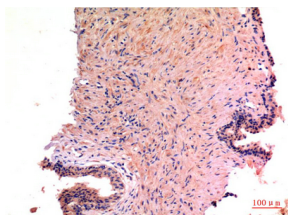
Immunofluorescence analysis of Human-lung-cancer tissue. 1.LC3A Mouse Monoclonal antibody(5G10)(red) was diluted at 1:200(4°C,overnight). 2. Cy3 labeled Secondary antibody was diluted at 1:300(room temperature, 50min).3. Picture B: DAPI(blue) 10min. Picture A:Target. Picture B: DAPI. Picture C: merge of A+B



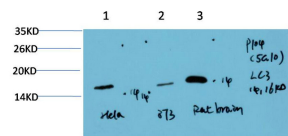
Immunofluorescence analysis of Mouse-spleen tissue. 1.LC3A Mouse Monoclonal antibody(5G10) (red) was diluted at 1:200(4°C,overnight). 2. Cy3 labeled Secondary antibody was diluted at 1:300(room temperature, 50min).3. Picture B: DAPI(blue) 10min. Picture A:Target. Picture B: DAPI. Picture C: merge of A+B



Immunohistochemical analysis of paraffin-embedded Human Hepatocarcinoma Tissue using LC3A Mouse Monoclonal antibody diluted at 1:200.



Immunohistochemical analysis of paraffin-embedded Human Prostate Carcinoma Tissue using LC3A Mouse Monoclonal antibody diluted at 1:200.



Western blot analysis of 1) HeLa Cell Lysate, 2) 3T3 Cell Lysate, 3) Rat Brain Tissue Lysate using LC3A Mouse Monoclonal antibody diluted at 1:1000.

Storage

-20°C for one year

501 Changsheng S Rd, Nanhu Dist, Jiaxing, Zhejiang, China

Tel: 86 21 31007137 | E-mail: save@bt-laboratory.com | www.bt-laboratory.com