

## Luciferase mouse Monoclonal Antibody(6B8)

### Description

<b>Product type</b>	Primary Antibody
<b>Code</b>	BT-MCA0059
<b>Host</b>	Mouse
<b>Isotype</b>	IgG
<b>Size</b>	20ul, 50ul, 100ul
<b>Immunogen</b>	Recombinant Protein of Luciferase of Luciferase
<b>Mol wt</b>	N/A
<b>Species reactivity</b>	Firefly
<b>Clonality</b>	Monoclonal
<b>Recommended application</b>	IF, ICC, WB,
<b>Concentration</b>	1 mg/ml
<b>Full name</b>	Luciferase
<b>Synonyms</b>	N/A

This product is for research use only, not for use in human, therapeutic or diagnostic procedure.

### Background

Luciferase from the firefly has become one of the more widely used reporter proteins for the study of gene expression. Luciferase catalyzes a bioluminescent reaction which requires the substrate luciferin as well as  $Mg^{2+}$  and ATP. Mixing these reagents with the cell extract containing luciferase, results in a flash of light that decays rapidly. This light can be detected by a luminometer. The total light emission is proportional to the luciferase activity of the sample.

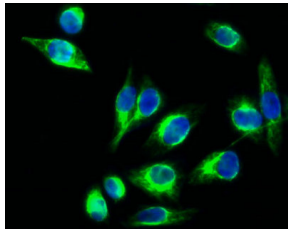
### Recommended Dilution

IF: 1:50-200

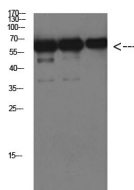
WB: 1:1000-2000

Not yet tested in other applications.

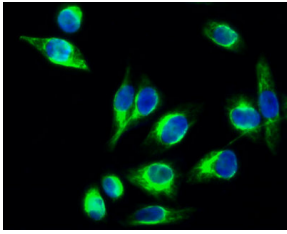
### Images



Immunofluorescence analysis of HEK293T cells transfected with Luciferase. 1. Luciferase Mouse Monoclonal antibody(6B8)(green) was diluted at 1:200(4°C, overnight). 2. Dylight 488 labeled Secondary antibody was diluted at 1:300 room temperature, 30min. DAPI(blue) 10min.



Western Blot analysis of over-expressed Luciferase protein using antibody diluted at 1:1000



Immunofluorescence analysis of HepG2 cells, Antibody diluted at 1:50. The picture on the right is blocked with the synthesized peptide.

### Storage

-20°C for one year

501 Changsheng S Rd, Nanhu Dist, Jiaxing, Zhejiang, China

Tel: 86 21 31007137 | E-mail: [save@bt-laboratory.com](mailto:save@bt-laboratory.com) | [www.bt-laboratory.com](http://www.bt-laboratory.com)