

TTR mouse Monoclonal Antibody(1D7)

Description

Product type	Primary Antibody
Code	BT-MCA0077
Host	Mouse
Isotype	IgG
Size	20ul, 50ul, 100ul
Immunogen	Recombinant Protein of TTR
Mol wt	N/A
Species reactivity	Human
Clonality	Monoclonal
Recommended application	IF, ICC, WB, IHC-p
Concentration	1 mg/ml
Full name	Transthyretin
Synonyms	Transthyretin; ATTR; Prealbumin; TBPA

This product is for research use only, not for use in human, therapeutic or diagnostic procedure.

Background

This gene encodes transthyretin, one of the three prealbumins including alpha-1-antitrypsin, transthyretin and orosomucoid. Transthyretin is a carrier protein| it transports thyroid hormones in the plasma and cerebrospinal fluid, and also transports retinol (vitamin A) in the plasma. The protein consists of a tetramer of identical subunits. More than 80 different mutations in this gene have been reported| most mutations are related to amyloid deposition, affecting predominantly peripheral nerve and/or the heart, and a small portion of the gene mutations is non-amyloidogenic. The diseases caused by mutations include amyloidotic polyneuropathy, euthyroid hyperthyroxinaemia, amyloidotic vitreous opacities, cardiomyopathy, oculoleptomeningeal amyloidosis, meningocerebrovascular amyloidosis, carpal tunnel syndrome, etc.

Recommended Dilution

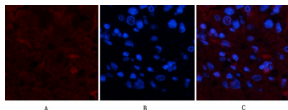
IF: 1:50-200

IHC-p: 1:50-300

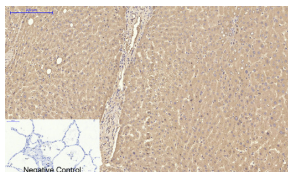
WB: 1:500-2000

Not yet tested in other applications.

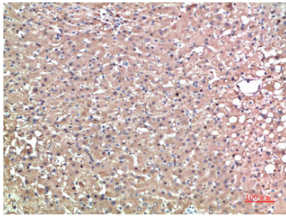
Images



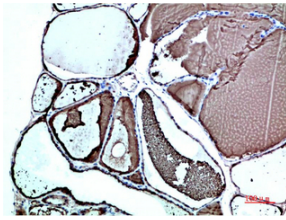
Immunofluorescence analysis of human-liver-cancer tissue. 1.TTR Mouse Monoclonal antibody(1D7) (red) was diluted at 1:200(4°C,overnight). 2. Cy3 labeled Secondary antibody was diluted at 1:300(room temperature, 50min).3. Picture B: DAPI(blue) 10min. Picture A:Target. Picture B: DAPI. Picture C: merge of A+B



Immunohistochemical analysis of paraffin-embedded Human-lung tissue. 1.TTR Mouse Monoclonal antibody(1D7) was diluted at 1:200(4°C,overnight). 2.Sodium citrate pH 6.0 was used for antibody retrieval(>98°C,20min). 3.Secondary antibody was diluted at 1:200(room temperature, 30min). Negative control was used by secondary antibody only.



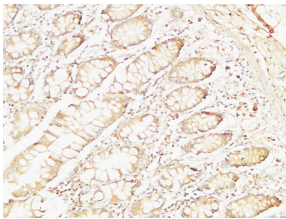
Immunohistochemical analysis of paraffin-embedded Human Liver Carcinoma Tissue using TTR Mouse Monoclonal antibody diluted at 1:200



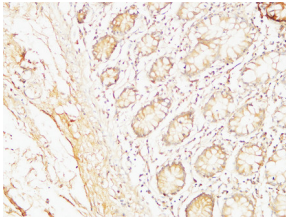
Immunohistochemical analysis of paraffin-embedded Human Thyroid Tissue using TTR Mouse Monoclonal antibody diluted at 1:200



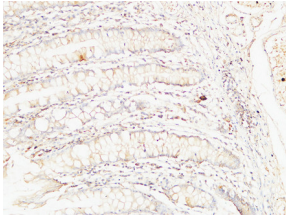
Western blot analysis of Human Serum using TTR Mouse Monoclonal antibody diluted at 1:2000.



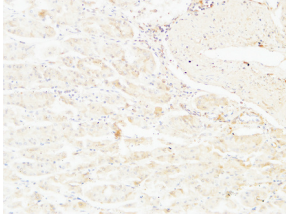
Immunohistochemical analysis of paraffin-embedded Human colon.1.Antibody was diluted at 1:200(4°C overnight). 2.High-pressure and temperature EDTA, pH8.0 was used for antigen retrieval. 3.Secondary antibody was diluted at 1:200(room temperature, 30min).



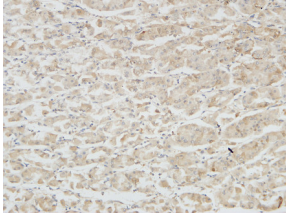
Immunohistochemical analysis of paraffin-embedded Human colon.1.Antibody was diluted at 1:200(4°C overnight). 2.High-pressure and temperature EDTA, pH8.0 was used for antigen retrieval. 3.Secondary antibody was diluted at 1:200(room temperature, 30min).



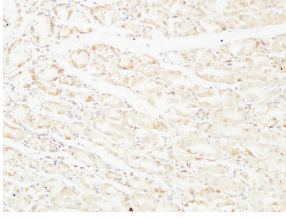
Immunohistochemical analysis of paraffin-embedded Human colon.1.Antibody was diluted at 1:200(4°C overnight). 2.High-pressure and temperature EDTA, pH8.0 was used for antigen retrieval. 3.Secondary antibody was diluted at 1:200(room temperature, 30min).



Immunohistochemical analysis of paraffin-embedded Human stomach.1.Antibody was diluted at 1:200(4°C overnight). 2.High-pressure and temperature EDTA, pH8.0 was used for antigen retrieval. 3.Secondary antibody was diluted at 1:200(room temperature, 30min).



Immunohistochemical analysis of paraffin-embedded Human stomach.1.Antibody was diluted at 1:200(4°C overnight). 2.High-pressure and temperature EDTA, pH8.0 was used for antigen retrieval. 3.Secondary antibody was diluted at 1:200(room temperature, 30min).



Immunohistochemical analysis of paraffin-embedded Human stomach.1.Antibody was diluted at 1:200(4°C overnight). 2.High-pressure and temperature EDTA, pH8.0 was used for antigen retrieval. 3.Secondary antibody was diluted at 1:200(room temperature, 30min).

Storage

-20°C for one year

501 Changsheng S Rd, Nanhu Dist, Jiaxing, Zhejiang, China

Tel: 86 21 31007137 | E-mail: save@bt-laboratory.com | www.bt-laboratory.com