

## Alpha-tubulin (Acetyl Lys40) Monoclonal Antibody(4A8)

### Description

<b>Product type</b>	Primary Antibody
<b>Code</b>	BT-MCA0084
<b>Host</b>	Mouse
<b>Isotype</b>	IgG
<b>Size</b>	20ul, 50ul, 100ul
<b>Immunogen</b>	Synthetic Peptide of $\alpha$ -tubulin (Acetyl Lys40)
<b>Mol wt</b>	N/A
<b>Species reactivity</b>	Human,Rat,Mouse
<b>Clonality</b>	Monoclonal
<b>Recommended application</b>	WB, IF, ICC, IHC-p
<b>Concentration</b>	1 mg/ml
<b>Full name</b>	Tubulin alpha-1B chain
<b>Synonyms</b>	Tubulin alpha-1B chain; Alpha-tubulin ubiquitous; Tubulin K-alpha-1; Tubulin alpha-ubiquitous chain

This product is for research use only, not for use in human, therapeutic or diagnostic procedure.

### Background

Tubulin is the major constituent of microtubules. It binds two moles of GTP, one at an exchangeable site on the beta chain and one at a non-exchangeable site on the alpha-chain.,PTM:Undergoes a tyrosination/detyrosination cycle, the cyclic removal and re-addition of a C-terminal tyrosine residue by the enzymes tubulin tyrosine carboxypeptidase (TTCP) and tubulin tyrosine ligase (TTL), respectively.,similarity:Belongs to the tubulin family.,subunit:Dimer of alpha and beta chains.,

### Recommended Dilution

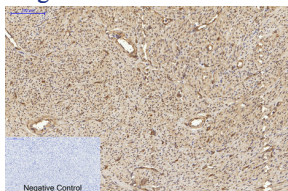
IF: 1:200

IHC: 1:50-100

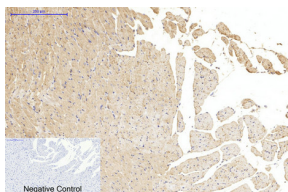
WB: 1:1000-2000

Not yet tested in other applications.

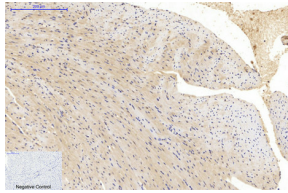
### Images



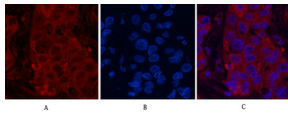
Immunohistochemical analysis of paraffin-embedded Human-uterus tissue. 1.Alpha-tubulin (Acetyl Lys40) Monoclonal antibody(4A8) was diluted at 1:200(4°C,overnight). 2.Sodium citrate pH 6.0 was used for antibody retrieval(>98°C,20min). 3.Secondary antibody was diluted at 1:200(room temperature, 30min). Negative control was used by secondary antibody only.



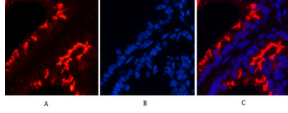
Immunohistochemical analysis of paraffin-embedded Rat-heart tissue. 1.Alpha-tubulin (Acetyl Lys40) Monoclonal antibody(4A8) was diluted at 1:200(4°C,overnight). 2.Sodium citrate pH 6.0 was used for antibody retrieval(>98°C,20min). 3.Secondary antibody was diluted at 1:200(room temperature, 30min). Negative control was used by secondary antibody only.



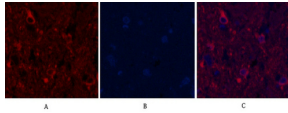
Immunohistochemical analysis of paraffin-embedded Mouse-heart tissue. 1.Alpha-tubulin (Acetyl Lys40) Monoclonal antibody(4A8) was diluted at 1:200(4°C,overnight). 2.Sodium citrate pH 6.0 was used for antibody retrieval(>98°C,20min). 3.Secondary antibody was diluted at 1:200(room temperature, 30min). Negative control was used by secondary antibody only.



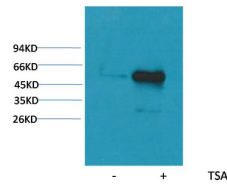
Immunofluorescence analysis of Human-liver-cancer tissue. 1.Alpha-tubulin (Acetyl Lys40) Monoclonal antibody(4A8)(red) was diluted at 1:200(4°C,overnight). 2. Cy3 labeled Secondary antibody was diluted at 1:300(room temperature, 50min).3. Picture B: DAPI(blue) 10min. Picture A:Target. Picture B: DAPI. Picture C: merge of A+B



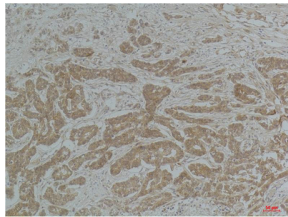
Immunofluorescence analysis of Mouse-lung tissue. 1.Alpha-tubulin (Acetyl Lys40) Monoclonal antibody(4A8)(red) was diluted at 1:200(4°C,overnight). 2. Cy3 labeled Secondary antibody was diluted at 1:300(room temperature, 50min).3. Picture B: DAPI(blue) 10min. Picture A:Target. Picture B: DAPI. Picture C: merge of A+B



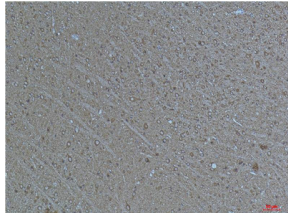
Immunofluorescence analysis of Rat-spinal-cord tissue. 1.Alpha-tubulin (Acetyl Lys40) Monoclonal antibody(4A8)(red) was diluted at 1:200(4°C,overnight). 2. Cy3 labeled Secondary antibody was diluted at 1:300(room temperature, 50min).3. Picture B: DAPI(blue) 10min. Picture A:Target. Picture B: DAPI. Picture C: merge of A+B



Western blot analysis of extracts from HeLa cells, untreated (-) or treated with TSA (1μM, 18 hr; +), using Acetyl- a-tubulin(Lys40) Mouse Monoclonal antibody 1:2000.



Immunohistochemical analysis of paraffin-embedded Human Breast Carcinoma using a-tubulin(Acetyl Lys40) Mouse Monoclonal antibody diluted at 1:200.



Immunohistochemical analysis of paraffin-embedded Mouse Brain Tissue using a-tubulin(Acetyl Lys40) Mouse Monoclonal antibody diluted at 1:200.

### Storage

-20°C for one year

501 Changsheng S Rd, Nanhu Dist, Jiaxing, Zhejiang, China

Tel: 86 21 31007137 | E-mail: [save@bt-laboratory.com](mailto:save@bt-laboratory.com) | [www.bt-laboratory.com](http://www.bt-laboratory.com)