

Beta II tubulin Monoclonal Antibody(Mix)

Description

| | |
|--------------------------------|--------------------------------------|
| Product type | Primary Antibody |
| Code | BT-MCA0087 |
| Host | Mouse |
| Isotype | IgG |
| Size | 20ul, 50ul, 100ul |
| Immunogen | Synthetic Peptide of Beta II tubulin |
| Mol wt | N/A |
| Species reactivity | Mouse,Rat |
| Clonality | Monoclonal |
| Recommended application | WB, IHC-p, IF, IP |
| Concentration | 1 mg/ml |
| Full name | Tubulin beta-2A chain |
| Synonyms | Tubulin beta-2A chain |

This product is for research use only, not for use in human, therapeutic or diagnostic procedure.

Background

Microtubules, key participants in processes such as mitosis and intracellular transport, are composed of heterodimers of alpha- and beta-tubulins. The protein encoded by this gene is a beta-tubulin. Defects in this gene are associated with complex cortical dysplasia with other brain malformations-5. Two transcript variants encoding distinct isoforms have been found for this gene.

Recommended Dilution

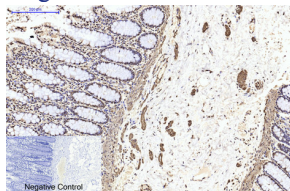
IHC: 1:50-300

IP: 1:200

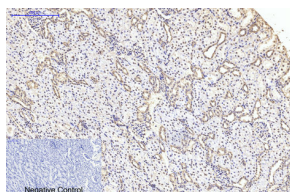
WB: 1:50000-100000

Not yet tested in other applications.

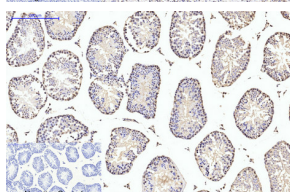
Images



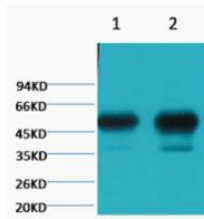
Immunohistochemical analysis of paraffin-embedded Human-colon tissue. 1.Beta II tubulin Monoclonal antibody(Mix) was diluted at 1:200(4°C,overnight). 2.Sodium citrate pH 6.0 was used for antibody retrieval(>98°C,20min). 3.Secondary antibody was diluted at 1:200(room temperature, 30min). Negative control was used by secondary antibody only.



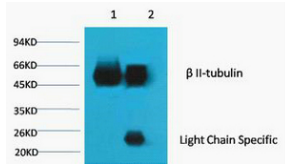
Immunohistochemical analysis of paraffin-embedded Rat-kidney tissue. 1.Beta II tubulin Monoclonal antibody(Mix) was diluted at 1:200(4°C,overnight). 2.Sodium citrate pH 6.0 was used for antibody retrieval(>98°C,20min). 3.Secondary antibody was diluted at 1:200(room temperature, 30min). Negative control was used by secondary antibody only.



Immunohistochemical analysis of paraffin-embedded Mouse-testis tissue. 1.Beta II tubulin Monoclonal antibody(Mix) was diluted at 1:200(4°C,overnight). 2.Sodium citrate pH 6.0 was used for antibody retrieval(>98°C,20min). 3.Secondary antibody was diluted at 1:200(room temperature, 30min). Negative control was used by secondary antibody only.



Western blot analysis of Mouse Brain tissue and Rat Brain tissue diluted at 1:100000.



1) Input: Mouse Brain Tissue Lysate 2) IP product: IP dilute 1: 200 Western blot analysis: primary antibody : TDY191 1: 10000 Secondary antibody: Goat anti-Mouse IgG, Light chain specific (S003), 1: 5000

Storage

-20°C for one year

501 Changsheng S Rd, Nanhu Dist, Jiaxing, Zhejiang, China

Tel: 86 21 31007137 | E-mail: save@bt-laboratory.com | www.bt-laboratory.com