

Beta-actin Monoclonal Antibody(5B7)

Description

Product type	Primary Antibody
Code	BT-MCA0088
Host	Mouse
Isotype	IgG
Size	20ul, 50ul, 100ul
Immunogen	Synthetic Peptide of Beta-actin
Mol wt	41737
Species reactivity	Human,Rat,Mouse,Monkey,Dog,Chicken,Hamster,Rabbit,Insect
Clonality	Monoclonal
Recommended application	IF, ICC, WB, IHC-p
Concentration	1 mg/ml
Full name	Actin cytoplasmic 1
Synonyms	ACTB; Actin; cytoplasmic 1; Beta-actin; Actin Beta; Beta-Actin; Beta actin

This product is for research use only, not for use in human, therapeutic or diagnostic procedure.

Background

This gene encodes one of six different actin proteins. Actins are highly conserved proteins that are involved in cell motility, structure, and integrity. This actin is a major constituent of the contractile apparatus and one of the two nonmuscle cytoskeletal actins.

Recommended Dilution

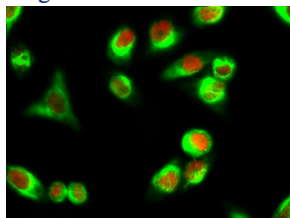
IF: 1:50-200

IHC: 1:200-300

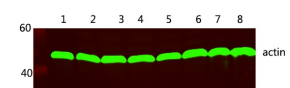
WB: 1:5000-20000

Not yet tested in other applications.

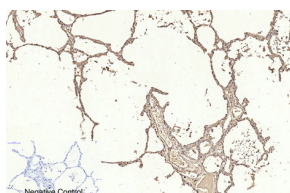
Images



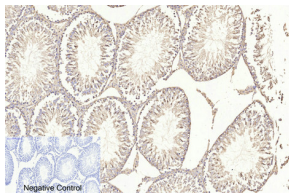
Immunofluorescence analysis of HeLa cell. Cyclin A Polyclonal Antibody(red) was diluted at 1:200(4°C overnight). Beta-actin Monoclonal antibody(5B7)(green) was diluted at 1:200(4°C overnight).



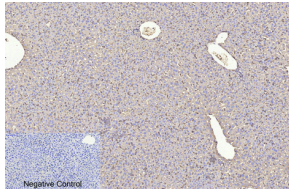
Western blot analysis of 1 HEK293 2 SW480 3 HEPG2 4 MCF-7 5 mouse brain 6 Rat brain 7 HeLa 8 A549 lysates, primary antibody was diluted at 1:5000, 4°C overnight, secondary antibody was diluted at 1:10000, 37°C 1 hour.



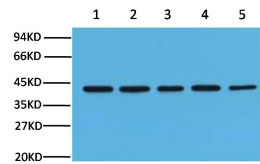
Immunohistochemical analysis of paraffin-embedded Human-lung tissue. 1.Beta-actin Monoclonal antibody(5B7) was diluted at 1:200(4°C,overnight). 2.Sodium citrate pH 6.0 was used for antibody retrieval(>98°C,20min). 3.Secondary antibody was diluted at 1:200(room temperature, 30min). Negative control was used by secondary antibody only.



Immunohistochemical analysis of paraffin-embedded Rat-testis tissue. 1.Beta-actin Monoclonal antibody(5B7) was diluted at 1:200(4°C,overnight). 2.Sodium citrate pH 6.0 was used for antibody retrieval(>98°C,20min). 3.Secondary antibody was diluted at 1:200(room temperature, 30min). Negative control was used by secondary antibody only.



Immunohistochemical analysis of paraffin-embedded Mouse-liver tissue. 1.Beta-actin Monoclonal antibody(5B7) was diluted at 1:200(4°C,overnight). 2.Sodium citrate pH 6.0 was used for antibody retrieval(>98°C,20min). 3.Secondary antibody was diluted at 1:200(room temperature, 30min). Negative control was used by secondary antibody only.



Western blot analysis of Hela (1) Rat brain (2) Mouse brain (3) Chicken lung (4) and Rabbit testis (5) diluted at 1:10000.

Storage

-20°C for one year

501 Changsheng S Rd, Nanhu Dist, Jiaxing, Zhejiang, China

Tel: 86 21 31007137 | E-mail: save@bt-laboratory.com | www.bt-laboratory.com