

Beta-tubulin Monoclonal Antibody(Mix)

Description

Product type	Primary Antibody
Code	BT-MCA0090
Host	Mouse
Isotype	IgG
Size	20ul, 50ul, 100ul
Immunogen	Synthetic Peptide of Beta-tubulin
Mol wt	50433
Species reactivity	Human,Rat,Mouse,Monkey,Dog,Chicken,Hamster,Rabbit
Clonality	Monoclonal
Recommended application	WB, IHC-p, IF, IP
Concentration	1 mg/ml
Full name	Tubulin beta-3 chain
Synonyms	TUBB3; TUBB4; Tubulin beta-3 chain; Tubulin beta-4 chain; Tubulin beta-III

This product is for research use only, not for use in human, therapeutic or diagnostic procedure.

Background

This gene encodes a class III member of the beta tubulin protein family. Beta tubulins are one of two core protein families (alpha and beta tubulins) that heterodimerize and assemble to form microtubules. This protein is primarily expressed in neurons and may be involved in neurogenesis and axon guidance and maintenance. Mutations in this gene are the cause of congenital fibrosis of the extraocular muscles type 3. Alternate splicing results in multiple transcript variants. A pseudogene of this gene is found on chromosome 6.

Recommended Dilution

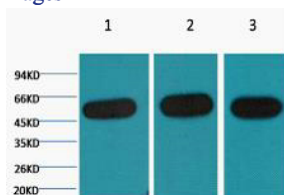
IHC: 1:200

IP: 1:200

WB: 1:500-10000

Not yet tested in other applications.

Images



Western blot analysis of 1) Hela, 2) Mouse Kidney tissue, 3) Rat Heart tissue diluted at 1:5000.

Storage

-20°C for one year