

ACE1 Monoclonal Antibody

Description

Product type	Primary Antibody
Code	BT-MCA0124
Host	Mouse
Isotype	IgG
Size	50ul, 100ul
Immunogen	Purified recombinant human ACE1 (N-terminus) protein fragments expressed in E.coli.
Mol wt	N/A
Species reactivity	Human,Mouse,Rat,Bovine
Clonality	Monoclonal
Recommended application	WB
Concentration	1 mg/ml
Full name	Angiotensin-converting enzyme
Synonyms	ACE; DCP; DCP1; Angiotensin-converting enzyme; ACE; Dipeptidyl carboxypeptidase I; Kininase II; CD antigen CD143

This product is for research use only, not for use in human, therapeutic or diagnostic procedure.

Background

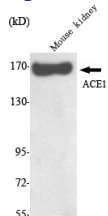
This gene encodes an enzyme involved in catalyzing the conversion of angiotensin I into a physiologically active peptide angiotensin II. Angiotensin II is a potent vasopressor and aldosterone-stimulating peptide that controls blood pressure and fluid-electrolyte balance. This enzyme plays a key role in the renin-angiotensin system. Many studies have associated the presence or absence of a 287 bp Alu repeat element in this gene with the levels of circulating enzyme or cardiovascular pathophysiology. Multiple alternatively spliced transcript variants encoding different isoforms have been identified, and two most abundant spliced variants encode the somatic form and the testicular form, respectively, that are equally active.

Recommended Dilution

WB: 1:1000 - 1:2000

Not yet tested in other applications.

Images



Western Blot analysis using ACE1 Monoclonal antibody against mouse kidney lysate.

Storage

-20°C for one year