

Actin Beta Monoclonal Antibody

Description

Product type	Primary Antibody
Code	BT-MCA0136
Host	Mouse
Isotype	IgG
Size	50ul, 100ul
Immunogen	Synthetic peptide corresponding to amino-terminal residues of human Actin Beta, conjugated to KLH.
Mol wt	N/A
Species reactivity	Human, Mouse, Rat, Hamster, Monkey
Clonality	Monoclonal
Recommended application	WB, IF, ICC, FCM, ELISA
Concentration	1 mg/ml
Full name	Actin cytoplasmic 1
Synonyms	ACTB; Actin; cytoplasmic 1; Beta-actin

This product is for research use only, not for use in human, therapeutic or diagnostic procedure.

Background

This gene encodes one of six different actin proteins. Actins are highly conserved proteins that are involved in cell motility, structure, and integrity. This actin is a major constituent of the contractile apparatus and one of the two nonmuscle cytoskeletal actins.

Recommended Dilution

ELISA: 1:10000

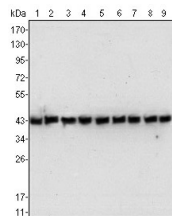
FC: 1:200 - 1:400

IF: 1:200 - 1:1000

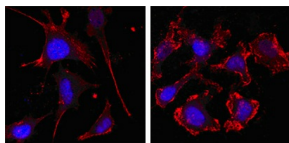
WB: 1:500 - 1:2000

Not yet tested in other applications.

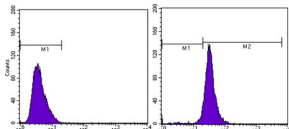
Images



Western Blot analysis using Actin Beta Monoclonal antibody against NIH/3T3 (1) Jurkat (2) HeLa (3) CHO (4) PC12 (5) HEK293 (6) COS (7) A549 (8) and MCF-7 (9) cell lysate.



Confocal immunofluorescence analysis of SKBR-3 (left) and A549 (right) cells using Actin Beta Monoclonal antibody (red, the secondary Ab is Cy3-Goat anti mouse IgG). Blue: DRAQ5 fluorescent DNA dye.



Flow cytometric analysis of MCF-7 cells using Actin Beta Monoclonal antibody (right) and negative control (left).

Storage

-20°C for one year

501 Changsheng S Rd, Nanhu Dist, Jiaxing, Zhejiang, China

Tel: 86 21 31007137 | E-mail: save@bt-laboratory.com | www.bt-laboratory.com