

## Actinin- Alpha2 Monoclonal Antibody

### Description

<b>Product type</b>	Primary Antibody
<b>Code</b>	BT-MCA0137
<b>Host</b>	Mouse
<b>Isotype</b>	IgG
<b>Size</b>	50ul, 100ul
<b>Immunogen</b>	Purified recombinant human Actinin- $\alpha$ 2 (C-terminus) protein fragments expressed in E.coli.
<b>Mol wt</b>	N/A
<b>Species reactivity</b>	Human,Rat,Bovine,Chicken,Dog,Pig,Zebrafish
<b>Clonality</b>	Monoclonal
<b>Recommended application</b>	WB, IF, ICC
<b>Concentration</b>	1 mg/ml
<b>Full name</b>	Alpha-actinin-2
<b>Synonyms</b>	ACTN2; Alpha-actinin-2; Alpha-actinin skeletal muscle isoform 2; F-actin cross-linking protein

This product is for research use only, not for use in human, therapeutic or diagnostic procedure.

### Background

Alpha actinins belong to the spectrin gene superfamily which represents a diverse group of cytoskeletal proteins, including the alpha and beta spectrins and dystrophins. Alpha actinin is an actin-binding protein with multiple roles in different cell types. In nonmuscle cells, the cytoskeletal isoform is found along microfilament bundles and adherens-type junctions, where it is involved in binding actin to the membrane. In contrast, skeletal, cardiac, and smooth muscle isoforms are localized to the Z-disc and analogous dense bodies, where they help anchor the myofibrillar actin filaments. This gene encodes a muscle-specific, alpha actinin isoform that is expressed in both skeletal and cardiac muscles. Several transcript variants encoding different isoforms have been found for this gene.

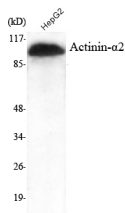
### Recommended Dilution

IF: 1:100 - 1:500

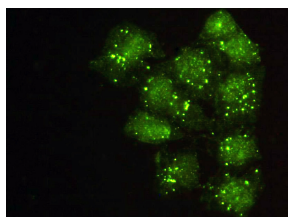
WB: 1:1000 - 1:2000

Not yet tested in other applications.

### Images



Western Blot analysis using Actinin-Alpha2 Monoclonal antibody against HepG2 cell lysate.



Immunofluorescence analysis of HeLa cells using Actinin-Alpha2 Monoclonal antibody.

## Storage

-20°C for one year

501 Changsheng S Rd, Nanhu Dist, Jiaxing, Zhejiang, China

Tel: 86 21 31007137 | E-mail: [save@bt-laboratory.com](mailto:save@bt-laboratory.com) | [www.bt-laboratory.com](http://www.bt-laboratory.com)