

AFP Monoclonal Antibody

Description

Product type	Primary Antibody
Code	BT-MCA0138
Host	Mouse
Isotype	IgG
Size	50ul, 100ul
Immunogen	Purified recombinant fragment of human AFP expressed in E. Coli.
Mol wt	N/A
Species reactivity	Human
Clonality	Monoclonal
Recommended application	WB, ELISA
Concentration	1 mg/ml
Full name	Alpha-fetoprotein
Synonyms	AFP; HPAFP; Alpha-fetoprotein; Alpha-1-fetoprotein; Alpha-fetoglobulin

This product is for research use only, not for use in human, therapeutic or diagnostic procedure.

Background

This gene encodes alpha-fetoprotein, a major plasma protein produced by the yolk sac and the liver during fetal life. Alpha-fetoprotein expression in adults is often associated with hepatoma or teratoma. However, hereditary persistence of alpha-fetoprotein may also be found in individuals with no obvious pathology. The protein is thought to be the fetal counterpart of serum albumin, and the alpha-fetoprotein and albumin genes are present in tandem in the same transcriptional orientation on chromosome 4. Alpha-fetoprotein is found in monomeric as well as dimeric and trimeric forms, and binds copper, nickel, fatty acids and bilirubin. The level of alpha-fetoprotein in amniotic fluid is used to measure renal loss of protein to screen for spina bifida and anencephaly.

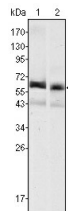
Recommended Dilution

ELISA: 1:10000

WB: 1:500 - 1:2000

Not yet tested in other applications.

Images



Western Blot analysis using AFP Monoclonal antibody against HepG2 (1) and SMMC-7721 (2) cell lysate.

Storage

-20°C for one year