

Akt2 Monoclonal Antibody

Description

Product type	Primary Antibody
Code	BT-MCA0145
Host	Mouse
Isotype	IgG
Size	50ul, 100ul
Immunogen	Purified recombinant fragment of human Akt2 expressed in E. Coli.
Mol wt	N/A
Species reactivity	Human,Rat,Monkey
Clonality	Monoclonal
Recommended application	WB, IHC-p, IF, ICC, ELISA
Concentration	1 mg/ml
Full name	RAC-beta serine,threonine-protein kinase
Synonyms	AKT2; RAC-beta serine; threonine-protein kinase; Protein kinase Akt-2; Protein kinase B beta; PKB beta; RAC-PK-beta

This product is for research use only, not for use in human, therapeutic or diagnostic procedure.

Background

This gene is a putative oncogene encoding a protein belonging to a subfamily of serine/threonine kinases containing SH2-like (Src homology 2-like) domains. The gene was shown to be amplified and overexpressed in 2 of 8 ovarian carcinoma cell lines and 2 of 15 primary ovarian tumors. Overexpression contributes to the malignant phenotype of a subset of human ductal pancreatic cancers. The encoded protein is a general protein kinase capable of phosphorylating several known proteins.

Recommended Dilution

ELISA: 1:10000

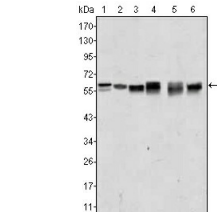
IF: 1:200 - 1:1000

IHC: 1:200 - 1:1000

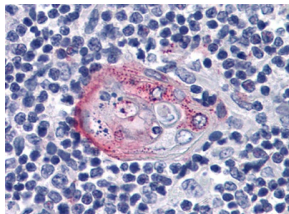
WB: 1:500 - 1:2000

Not yet tested in other applications.

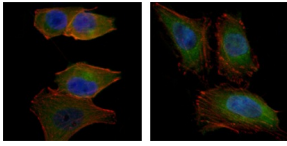
Images



Western Blot analysis using Akt2 Monoclonal antibody against A431 (1) Jurkat (2) HEK293 (3) A549 (4) MCF-7 (5) and PC-12 (6) cell lysate.



Immunohistochemistry analysis of paraffin-embedded human Thymus tissues with AEC staining using Akt2 Monoclonal antibody.



Immunofluorescence analysis of PANC-1 (left) and HeLa (right) cells using Akt2 Monoclonal antibody (green). Blue: DRAQ5 fluorescent DNA dye. Red: Actin filaments have been labeled with Alexa Fluor-555 phalloidin.

Storage

-20°C for one year

501 Changsheng S Rd, Nanhu Dist, Jiaxing, Zhejiang, China

Tel: 86 21 31007137 | E-mail: save@bt-laboratory.com | www.bt-laboratory.com