

ALB Monoclonal Antibody

Description

Product type	Primary Antibody
Code	BT-MCA0147
Host	Mouse
Isotype	IgG
Size	50ul, 100ul
Immunogen	Human sera albumin.
Mol wt	N/A
Species reactivity	Human
Clonality	Monoclonal
Recommended application	WB, ELISA
Concentration	1 mg/ml
Full name	Serum albumin
Synonyms	ALB; GIG20; GIG42; Serum albumin

This product is for research use only, not for use in human, therapeutic or diagnostic procedure.

Background

This gene encodes the most abundant protein in human blood. This protein functions in the regulation of blood plasma colloid osmotic pressure and acts as a carrier protein for a wide range of endogenous molecules including hormones, fatty acids, and metabolites, as well as exogenous drugs. Additionally, this protein exhibits an esterase-like activity with broad substrate specificity. The encoded preproprotein is proteolytically processed to generate the mature protein. A peptide derived from this protein, EPI-X4, is an endogenous inhibitor of the CXCR4 chemokine receptor.

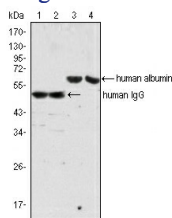
Recommended Dilution

ELISA: 1:10000

WB: 1:500 - 1:2000

Not yet tested in other applications.

Images



Western Blot analysis using ALB Monoclonal antibody (lane 3, 4) and Human IgG Monoclonal antibody (lane 1, 2) against human serum (lane 1, 3) and plasma (lane 2, 4).

Storage

-20°C for one year