

## ANP32A Monoclonal Antibody

### Description

Product type	Primary Antibody
Code	BT-MCA0160
Host	Mouse
Isotype	IgG
Size	50ul, 100ul
Immunogen	Purified recombinant fragment of human ANP32A expressed in E. Coli.
Mol wt	N/A
Species reactivity	Human
Clonality	Monoclonal
Recommended application	WB, IHC-p, IF, ELISA
Concentration	1 mg/ml
Full name	Acidic leucine-rich nuclear phosphoprotein 32 family member A
Synonyms	ANP32A; C15orf1; LANP; MAPM; PHAP1; Acidic leucine-rich nuclear phosphoprotein 32 family member A; Acidic nuclear phosphoprotein pp32; Leucine-rich acidic nuclear protein; LANP; Mapmodulin; Potent heat-stable protein phosphatase 2A inhibitor

This product is for research use only, not for use in human, therapeutic or diagnostic procedure.

### Background

#### Recommended Dilution

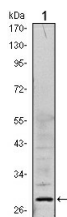
ELISA: 1:10000

IHC: 1:200 - 1:1000

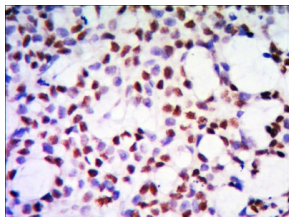
WB: 1:500 - 1:2000

Not yet tested in other applications.

### Images



Western Blot analysis using ANP32A Monoclonal antibody against HeLa (1) cell lysate.



Immunohistochemistry analysis of paraffin-embedded human kidney tissue with DAB staining using ANP32A Monoclonal antibody.

### Storage

-20°C for one year

