

Arg Monoclonal Antibody

Description

Product type	Primary Antibody
Code	BT-MCA0181
Host	Mouse
Isotype	IgG
Size	50ul, 100ul
Immunogen	Purified recombinant fragment of Arg expressed in E. Coli.
Mol wt	N/A
Species reactivity	Human, Mouse
Clonality	Monoclonal
Recommended application	WB, IF, ICC, ELISA
Concentration	1 mg/ml
Full name	Tyrosine-protein kinase ABL2
Synonyms	ABL2; ABL2L; ARG; Abelson tyrosine-protein kinase 2; Abelson murine leukemia viral oncogene homolog 2; Abelson-related gene protein; Tyrosine-protein kinase ARG

This product is for research use only, not for use in human, therapeutic or diagnostic procedure.

Background

This gene encodes a member of the Abelson family of nonreceptor tyrosine protein kinases. The protein is highly similar to the c-abl oncogene 1 protein, including the tyrosine kinase, SH2 and SH3 domains, and it plays a role in cytoskeletal rearrangements through its C-terminal F-actin- and microtubule-binding sequences. This gene is expressed in both normal and tumor cells, and is involved in translocation with the ets variant 6 gene in leukemia. Multiple alternatively spliced transcript variants encoding different protein isoforms have been found for this gene.

Recommended Dilution

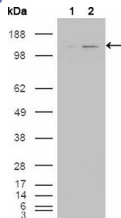
ELISA: 1:10000

IF: 1:200 - 1:1000

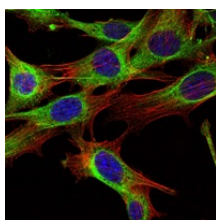
WB: 1:500 - 1:2000

Not yet tested in other applications.

Images



Western Blot analysis using Arg Monoclonal antibody against HEK293T cells transfected with the pCMV6-ENTRY control (1) and pCMV6-ENTRY ABL2 cDNA (2).



Immunofluorescence analysis of NIH/3T3 cells using Arg Monoclonal antibody (green). Blue: DRAQ5 fluorescent DNA dye. Red: Actin filaments have been labeled with Alexa Fluor-555 phalloidin.

Storage

-20°C for one year

501 Changsheng S Rd, Nanhu Dist, Jiaxing, Zhejiang, China

Tel: 86 21 31007137 | E-mail: save@bt-laboratory.com | www.bt-laboratory.com