

ASK 1 Monoclonal Antibody

Description

Product type	Primary Antibody
Code	BT-MCA0187
Host	Mouse
Isotype	IgG
Size	50ul, 100ul
Immunogen	Purified recombinant fragment of human ASK 1 expressed in E. Coli.
Mol wt	N/A
Species reactivity	Human
Clonality	Monoclonal
Recommended application	WB, IHC-p, IF, ICC, FCM, ELISA
Concentration	1 mg/ml
Full name	Mitogen-activated protein kinase kinase kinase 5
Synonyms	MAP3K5; ASK1; MAPKKK5; MEKK5; Mitogen-activated protein kinase kinase kinase 5; Apoptosis signal-regulating kinase 1; ASK-1; MAPK; ERK kinase kinase 5; MEK kinase 5; MEKK 5

This product is for research use only, not for use in human, therapeutic or diagnostic procedure.

Background

Mitogen-activated protein kinase (MAPK) signaling cascades include MAPK or extracellular signal-regulated kinase (ERK), MAPK kinase (MKK or MEK), and MAPK kinase kinase (MAPKKK or MEKK). MAPKK kinase/MEKK phosphorylates and activates its downstream protein kinase, MAPK kinase/MEK, which in turn activates MAPK. The kinases of these signaling cascades are highly conserved, and homologs exist in yeast, Drosophila, and mammalian cells. MAPKKK5 contains 1,374 amino acids with all 11 kinase subdomains. Northern blot analysis shows that MAPKKK5 transcript is abundantly expressed in human heart and pancreas. The MAPKKK5 protein phosphorylates and activates MKK4 (aliases SERK1, MAPKK4) in vitro, and activates c-Jun N-terminal kinase (JNK)/stress-activated protein kinase (SAPK) during transient expression in COS and 293 cells| MAPKKK5 does not activate MAPK/ERK.

Recommended Dilution

FC: 1:200 - 1:400

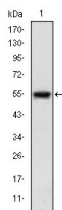
IF: 1:200 - 1:1000

IHC: 1:200 - 1:1000

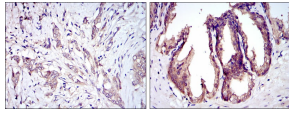
WB: 1:500 - 1:2000

Not yet tested in other applications.

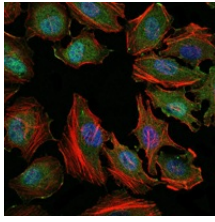
Images



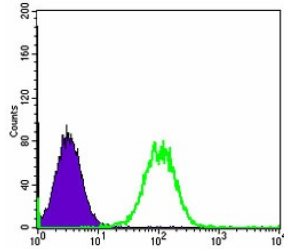
Western Blot analysis using ASK 1 Monoclonal antibody against recombinant protein.



Immunohistochemistry analysis of paraffin-embedded breast cancer tissues (left) and prostate tissues (right) with DAB staining using ASK 1 Monoclonal antibody.



Immunofluorescence analysis of HeLa cells using ASK 1 Monoclonal antibody (green). Blue: DRAQ5 fluorescent DNA dye. Red: Actin filaments have been labeled with Alexa Fluor-555 phalloidin.



Flow cytometric analysis of HeLa cells using ASK 1 Monoclonal antibody (green) and negative control (purple).

Storage

-20°C for one year

501 Changsheng S Rd, Nanhu Dist, Jiaxing, Zhejiang, China

Tel: 86 21 31007137 | E-mail: save@bt-laboratory.com | www.bt-laboratory.com