

B23 Monoclonal Antibody

Description

Product type	Primary Antibody
Code	BT-MCA0200
Host	Mouse
Isotype	IgG
Size	50ul, 100ul
Immunogen	Purified recombinant human B23 protein fragments expressed in E.coli.
Mol wt	N/A
Species reactivity	Human,Mouse,Rat,Bovine,Pig,Rabbit
Clonality	Monoclonal
Recommended application	WB, IF, ICC
Concentration	1 mg/ml
Full name	Nucleophosmin
Synonyms	NPM1; NPM; Nucleophosmin; NPM; Nucleolar phosphoprotein B23; Nucleolar protein NO38; Numatrin

This product is for research use only, not for use in human, therapeutic or diagnostic procedure.

Background

This gene encodes a phosphoprotein which moves between the nucleus and the cytoplasm. The gene product is thought to be involved in several processes including regulation of the ARF/p53 pathway. A number of genes are fusion partners have been characterized, in particular the anaplastic lymphoma kinase gene on chromosome 2. Mutations in this gene are associated with acute myeloid leukemia. More than a dozen pseudogenes of this gene have been identified. Alternative splicing results in multiple transcript variants.

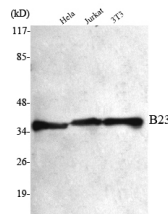
Recommended Dilution

IF: 1:100 - 1:500

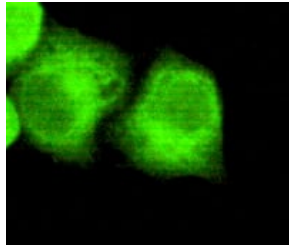
WB: 1:1000 - 1:2000

Not yet tested in other applications.

Images



Western Blot analysis using B23 Monoclonal antibody against HeLa, Jurkat, 3T3 cell lysate.



Immunofluorescence analysis of HeLa cells using B23 Monoclonal antibody.

Storage

-20°C for one year

501 Changsheng S Rd, Nanhu Dist, Jiaxing, Zhejiang, China

Tel: 86 21 31007137 | E-mail: save@bt-laboratory.com | www.bt-laboratory.com