

## BACE Monoclonal Antibody

### Description

<b>Product type</b>	Primary Antibody
<b>Code</b>	BT-MCA0202
<b>Host</b>	Mouse
<b>Isotype</b>	IgG
<b>Size</b>	50ul, 100ul
<b>Immunogen</b>	Purified recombinant human BACE (C-terminus) protein fragments expressed in E.coli.
<b>Mol wt</b>	N/A
<b>Species reactivity</b>	Human,Rat,Bovine,Dog,Pig
<b>Clonality</b>	Monoclonal
<b>Recommended application</b>	WB
<b>Concentration</b>	1 mg/ml
<b>Full name</b>	Beta-secretase 1
<b>Synonyms</b>	BACE1; BACE; KIAA1149; Beta-secretase 1; Aspartyl protease 2; ASP2; Asp 2; Beta-site amyloid precursor protein cleaving enzyme 1; Beta-site APP cleaving enzyme 1; Memapsin-2; Membrane-associated aspartic protease 2

This product is for research use only, not for use in human, therapeutic or diagnostic procedure.

### Background

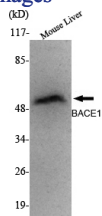
This gene encodes a member of the peptidase A1 family of aspartic proteases. Alternative splicing results in multiple transcript variants, at least one of which encodes a preproprotein that is proteolytically processed to generate the mature protease. This transmembrane protease catalyzes the first step in the formation of amyloid beta peptide from amyloid precursor protein. Amyloid beta peptides are the main constituent of amyloid beta plaques, which accumulate in the brains of human Alzheimer's disease patients.

### Recommended Dilution

WB: 1:1000 - 1:2000

Not yet tested in other applications.

### Images



Western Blot analysis using BACE Monoclonal antibody against mouse liver lysate.

### Storage

-20°C for one year