

Bcl-10 Monoclonal Antibody

Description

Product type	Primary Antibody
Code	BT-MCA0204
Host	Mouse
Isotype	IgG
Size	50ul, 100ul
Immunogen	Purified recombinant fragment of human Bcl-10 expressed in E. Coli.
Mol wt	N/A
Species reactivity	Human,Mouse
Clonality	Monoclonal
Recommended application	WB, IHC-p, IF, ICC, FCM, ELISA
Concentration	1 mg/ml
Full name	B-cell lymphoma,leukemia 10
Synonyms	BCL10; CIPER; CLAP; B-cell lymphoma; leukemia 10; B-cell CLL; lymphoma 10; Bcl-10; CARD-containing molecule enhancing NF-kappa-B; CARD-like apoptotic protein; hCLAP; CED-3; ICH-1 prodomain homologous E10-like regulator; CIPER; Cellular homolog

This product is for research use only, not for use in human, therapeutic or diagnostic procedure.

Background

This gene was identified by its translocation in a case of mucosa-associated lymphoid tissue (MALT) lymphoma. The protein encoded by this gene contains a caspase recruitment domain (CARD), and has been shown to induce apoptosis and to activate NF-kappaB. This protein is reported to interact with other CARD domain containing proteins including CARD9, 10, 11 and 14, which are thought to function as upstream regulators in NF-kappaB signaling. This protein is found to form a complex with MALT1, a protein encoded by another gene known to be translocated in MALT lymphoma. MALT1 and this protein are thought to synergize in the activation of NF-kappaB, and the deregulation of either of them may contribute to the same pathogenetic process that leads to the malignancy. Alternative splicing results in multiple transcript variants.

Recommended Dilution

FC: 1:200 - 1:400

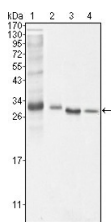
IF: 1:200 - 1:1000

IHC: 1:200 - 1:1000

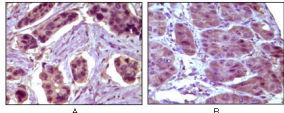
WB: 1:500 - 1:2000

Not yet tested in other applications.

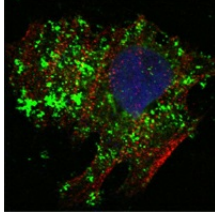
Images



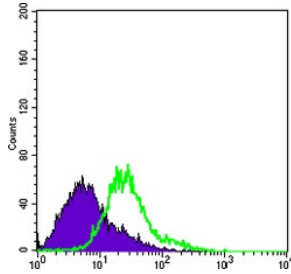
Western Blot analysis using Bcl-10 Monoclonal antibody against NIH/3T3 (1) HeLa (2) MCF-7 (3) and Jurkat (4) cell lysate.



Immunohistochemistry analysis of paraffin-embedded human breast carcinoma (A) and liver carcinoma (B), showing cytoplasmic localization with DAB staining using Bcl-10 Monoclonal antibody.



Confocal immunofluorescence analysis of HeLa cells using Bcl-10 Monoclonal antibody (green). Red: Actin filaments have been labeled with Alexa Fluor-555 phalloidin. Blue: DRAQ5 fluorescent DNA dye.



Flow cytometric analysis of HeLa cells using Bcl-10 Monoclonal antibody (green) and negative control (purple).

Storage

-20°C for one year

501 Changsheng S Rd, Nanhu Dist, Jiaxing, Zhejiang, China

Tel: 86 21 31007137 | E-mail: save@bt-laboratory.com | www.bt-laboratory.com