

Bcl-2 Monoclonal Antibody

Description

Product type	Primary Antibody
Code	BT-MCA0205
Host	Mouse
Isotype	IgG
Size	50ul, 100ul
Immunogen	Synthetic peptide corresponding to residues surrounding Bcl-2, conjugated to KLH.
Mol wt	N/A
Species reactivity	Human, Mouse
Clonality	Monoclonal
Recommended application	IHC-p, IF, ICC, FCM, ELISA
Concentration	1 mg/ml
Full name	Apoptosis regulator Bcl-2
Synonyms	BCL2; Apoptosis regulator Bcl-2

This product is for research use only, not for use in human, therapeutic or diagnostic procedure.

Background

This gene encodes an integral outer mitochondrial membrane protein that blocks the apoptotic death of some cells such as lymphocytes. Constitutive expression of BCL2, such as in the case of translocation of BCL2 to Ig heavy chain locus, is thought to be the cause of follicular lymphoma. Alternative splicing results in multiple transcript variants.

Recommended Dilution

ELISA: 1:10000

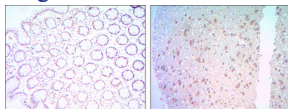
FC: 1:200 - 1:400

IF: 1:200 - 1:1000

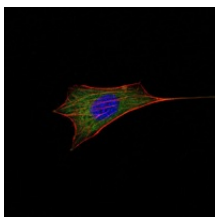
IHC: 1:200 - 1:1000

Not yet tested in other applications.

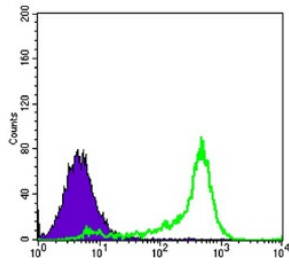
Images



Immunohistochemistry analysis of paraffin-embedded colon cancer tissues (left) and human brain tissues (right) with DAB staining using Bcl-2 Monoclonal antibody.



Immunofluorescence analysis of NIH/3T3 cells using Bcl-2 Monoclonal antibody (green). Blue: DRAQ5 fluorescent DNA dye. Red: Actin filaments have been labeled with Alexa Fluor-555 phalloidin.



Flow cytometric analysis of 3T3L1 cells using Bcl-2 Monoclonal antibody (green) and negative control (purple).

Storage

-20°C for one year

501 Changsheng S Rd, Nanhu Dist, Jiaxing, Zhejiang, China

Tel: 86 21 31007137 | E-mail: save@bt-laboratory.com | www.bt-laboratory.com