

BDH1 Monoclonal Antibody

Description

Product type	Primary Antibody
Code	BT-MCA0206
Host	Mouse
Isotype	IgG
Size	50ul, 100ul
Immunogen	Purified recombinant fragment of human BDH1 expressed in E. Coli.
Mol wt	N/A
Species reactivity	Human, Mouse
Clonality	Monoclonal
Recommended application	WB, IHC-p, IF, ELISA
Concentration	1 mg/ml
Full name	D-beta-hydroxybutyrate dehydrogenase, mitochondrial
Synonyms	BDH1; BDH; D-beta-hydroxybutyrate dehydrogenase; mitochondrial; BDH; 3-hydroxybutyrate dehydrogenase

This product is for research use only, not for use in human, therapeutic or diagnostic procedure.

Background

This gene encodes a member of the short-chain dehydrogenase/reductase gene family. The encoded protein forms a homotetrameric lipid-requiring enzyme of the mitochondrial membrane and has a specific requirement for phosphatidylcholine for optimal enzymatic activity. The encoded protein catalyzes the interconversion of acetoacetate and (R)-3-hydroxybutyrate, the two major ketone bodies produced during fatty acid catabolism. Alternatively spliced transcript variants encoding the same protein have been described.

Recommended Dilution

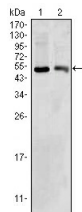
ELISA: 1:10000

IHC: 1:200 - 1:1000

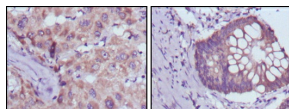
WB: 1:500 - 1:2000

Not yet tested in other applications.

Images



Western Blot analysis using BDH1 Monoclonal antibody against HepG2 (1) and NIH/3T3 (2) cell lysate.



Immunohistochemistry analysis of paraffin-embedded human liver cancer (left) and colorectal cancer tissues (right) with DAB staining using BDH1 Monoclonal antibody.

Storage

-20°C for one year

501 Changsheng S Rd, Nanhu Dist, Jiaxing, Zhejiang, China
Tel: 86 21 31007137 | E-mail: save@bt-laboratory.com | www.bt-laboratory.com