

## Bmx Monoclonal Antibody

### Description

<b>Product type</b>	Primary Antibody
<b>Code</b>	BT-MCA0227
<b>Host</b>	Mouse
<b>Isotype</b>	IgG
<b>Size</b>	50ul, 100ul
<b>Immunogen</b>	Purified recombinant fragment of human Bmx expressed in E. Coli.
<b>Mol wt</b>	N/A
<b>Species reactivity</b>	Human
<b>Clonality</b>	Monoclonal
<b>Recommended application</b>	WB, ELISA
<b>Concentration</b>	1 mg/ml
<b>Full name</b>	Cytoplasmic tyrosine-protein kinase BMX
<b>Synonyms</b>	BMX; Cytoplasmic tyrosine-protein kinase BMX; Bone marrow tyrosine kinase gene in chromosome X protein; Epithelial and endothelial tyrosine kinase; ETK; NTK38

This product is for research use only, not for use in human, therapeutic or diagnostic procedure.

### Background

This gene encodes a non-receptor tyrosine kinase belonging to the Tec kinase family. The protein contains a PH-like domain, which mediates membrane targeting by binding to phosphatidylinositol 3,4,5-triphosphate (PIP3), and a SH2 domain that binds to tyrosine-phosphorylated proteins and functions in signal transduction. The protein is implicated in several signal transduction pathways including the Stat pathway, and regulates differentiation and tumorigenicity of several types of cancer cells. Alternatively spliced transcript variants have been found for this gene.

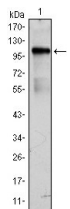
### Recommended Dilution

ELISA: 1:10000

WB: 1:500 - 1:2000

Not yet tested in other applications.

### Images



Western Blot analysis using Bmx Monoclonal antibody against BMX-hlgGfC transfected HEK293 cell lysate.

### Storage

-20°C for one year