

## BNP Monoclonal Antibody

### Description

<b>Product type</b>	Primary Antibody
<b>Code</b>	BT-MCA0230
<b>Host</b>	Mouse
<b>Isotype</b>	IgG
<b>Size</b>	50ul, 100ul
<b>Immunogen</b>	Synthetic peptide corresponding to aa (Glu-Pro-Leu-Gln-Glu-Ser-Pro-Arg-Pro-Thr-Gly-Val-Trp-Cys) of human BNP, conjugated to KLH.
<b>Mol wt</b>	N/A
<b>Species reactivity</b>	Human
<b>Clonality</b>	Monoclonal
<b>Recommended application</b>	IHC-p, IF, ELISA
<b>Concentration</b>	1 mg/ml
<b>Full name</b>	Natriuretic peptides B
<b>Synonyms</b>	NPPB; Natriuretic peptides B; Gamma-brain natriuretic peptide

This product is for research use only, not for use in human, therapeutic or diagnostic procedure.

### Background

This gene is a member of the natriuretic peptide family and encodes a secreted protein which functions as a cardiac hormone. The protein undergoes two cleavage events, one within the cell and a second after secretion into the blood. The protein's biological actions include natriuresis, diuresis, vasorelaxation, inhibition of renin and aldosterone secretion, and a key role in cardiovascular homeostasis. A high concentration of this protein in the bloodstream is indicative of heart failure. The protein also acts as an antimicrobial peptide with antibacterial and antifungal activity. Mutations in this gene have been associated with postmenopausal osteoporosis.

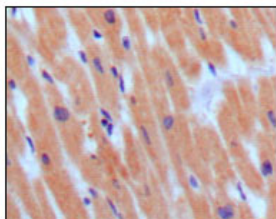
### Recommended Dilution

ELISA: 1:10000

IHC: 1:200 - 1:1000

Not yet tested in other applications.

### Images



Immunohistochemistry analysis of paraffin-embedded human normal myocardium, showing cytoplasmic localization with DAB staining using BNP Monoclonal antibody.

### Storage

-20°C for one year