

Cbl Monoclonal Antibody

Description

| | |
|--------------------------------|---|
| Product type | Primary Antibody |
| Code | BT-MCA0263 |
| Host | Mouse |
| Isotype | IgG |
| Size | 50ul, 100ul |
| Immunogen | Purified recombinant fragment of human Cbl expressed in E. Coli. |
| Mol wt | N/A |
| Species reactivity | Human,Mouse,Rat |
| Clonality | Monoclonal |
| Recommended application | WB, IHC-p, IF, ICC, FCM, ELISA |
| Concentration | 1 mg/ml |
| Full name | E3 ubiquitin-protein ligase CBL |
| Synonyms | CBL; CBL2; RNF55; E3 ubiquitin-protein ligase CBL; Casitas B-lineage lymphoma proto-oncogene; Proto-oncogene c-Cbl; RING finger protein 55; Signal transduction protein CBL |

This product is for research use only, not for use in human, therapeutic or diagnostic procedure.

Background

This gene is a proto-oncogene that encodes a RING finger E3 ubiquitin ligase. The encoded protein is one of the enzymes required for targeting substrates for degradation by the proteasome. This protein mediates the transfer of ubiquitin from ubiquitin conjugating enzymes (E2) to specific substrates. This protein also contains an N-terminal phosphotyrosine binding domain that allows it to interact with numerous tyrosine-phosphorylated substrates and target them for proteasome degradation. As such it functions as a negative regulator of many signal transduction pathways. This gene has been found to be mutated or translocated in many cancers including acute myeloid leukaemia, and expansion of CGG repeats in the 5' UTR has been associated with Jacobsen syndrome. Mutations in this gene are also the cause of Noonan syndrome-like disorder.

Recommended Dilution

FC: 1:200 - 1:400

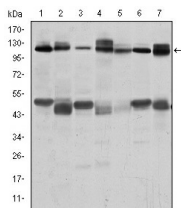
IF: 1:200 - 1:1000

IHC: 1:200 - 1:1000

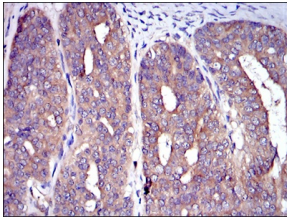
WB: 1:500 - 1:2000

Not yet tested in other applications.

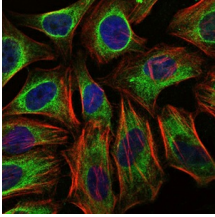
Images



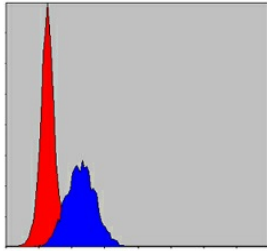
Western Blot analysis using Cbl Monoclonal antibody against RAJI (1) RAW264.7 (2) K562 (3) SKBR-3 (4) 3T3-L1 (5) THP-1 (6) and PC-12 (7) cell lysate.



Immunohistochemistry analysis of paraffin-embedded ovarian cancer tissues with DAB staining using Cbl Monoclonal antibody.



Immunofluorescence analysis of HeLa cells using Cbl Monoclonal antibody (green). Blue: DRAQ5 fluorescent DNA dye. Red: Actin filaments have been labeled with Alexa Fluor-555 phalloidin.



Flow cytometric analysis of MCF-7 cells using Cbl Monoclonal antibody (blue) and negative control (red).

Storage

-20°C for one year

501 Changsheng S Rd, Nanhu Dist, Jiaxing, Zhejiang, China

Tel: 86 21 31007137 | E-mail: save@bt-laboratory.com | www.bt-laboratory.com