

CBX1 Monoclonal Antibody

Description

Product type	Primary Antibody
Code	BT-MCA0266
Host	Mouse
Isotype	IgG
Size	50ul, 100ul
Immunogen	Purified recombinant fragment of human CBX1 expressed in E. Coli.
Mol wt	N/A
Species reactivity	Human,Monkey
Clonality	Monoclonal
Recommended application	WB, IF, ICC, FCM, ELISA
Concentration	1 mg/ml
Full name	Chromobox protein homolog 1
Synonyms	CBX1; CBX; Chromobox protein homolog 1; HP1Hsbeta; Heterochromatin protein 1 homolog beta; HP1 beta; Heterochromatin protein p25; M31; Modifier 1 protein; p25beta

This product is for research use only, not for use in human, therapeutic or diagnostic procedure.

Background

This gene encodes a highly conserved nonhistone protein, which is a member of the heterochromatin protein family. The protein is enriched in the heterochromatin and associated with centromeres. The protein has a single N-terminal chromodomain which can bind to histone proteins via methylated lysine residues, and a C-terminal chromo shadow-domain (CSD) which is responsible for the homodimerization and interaction with a number of chromatin-associated nonhistone proteins. The protein may play an important role in the epigenetic control of chromatin structure and gene expression. Several related pseudogenes are located on chromosomes 1, 3, and X. Multiple alternatively spliced variants, encoding the same protein, have been identified.

Recommended Dilution

ELISA: 1:10000

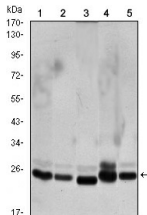
FC: 1:200 - 1:400

IF: 1:200 - 1:1000

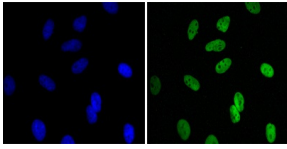
WB: 1:500 - 1:2000

Not yet tested in other applications.

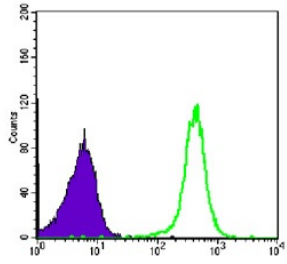
Images



Western Blot analysis using CBX1 Monoclonal antibody against HeLa (1) COS7 (2) NIH/3T3 (3) A431 (4) and C6 (5) cell lysate.



Immunofluorescence analysis of HeLa cells using CBX1 Monoclonal antibody (green). Blue: DRAQ5 fluorescent DNA dye.



Flow cytometric analysis of COS7 cells using CBX1 Monoclonal antibody (green) and negative control (purple).

Storage

-20°C for one year

501 Changsheng S Rd, Nanhu Dist, Jiaxing, Zhejiang, China

Tel: 86 21 31007137 | E-mail: save@bt-laboratory.com | www.bt-laboratory.com