

CD166 Monoclonal Antibody

Description

Product type	Primary Antibody
Code	BT-MCA0278
Host	Mouse
Isotype	IgG
Size	50ul, 100ul
Immunogen	Purified recombinant fragment of CD166 (aa405-524) expressed in E. Coli.
Mol wt	N/A
Species reactivity	Human
Clonality	Monoclonal
Recommended application	IHC-p, IF, ELISA
Concentration	1 mg/ml
Full name	CD166 antigen
Synonyms	ALCAM; MEMD; CD166 antigen; Activated leukocyte cell adhesion molecule; CD antigen CD166

This product is for research use only, not for use in human, therapeutic or diagnostic procedure.

Background

This gene encodes activated leukocyte cell adhesion molecule (ALCAM), also known as CD166 (cluster of differentiation 166), which is a member of a subfamily of immunoglobulin receptors with five immunoglobulin-like domains (VVC2C2C2) in the extracellular domain. This protein binds to T-cell differentiation antigen CD6, and is implicated in the processes of cell adhesion and migration. Multiple alternatively spliced transcript variants encoding different isoforms have been found.

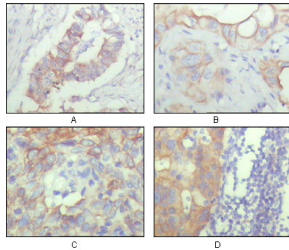
Recommended Dilution

ELISA: 1:10000

IHC: 1:200 - 1:1000

Not yet tested in other applications.

Images



Immunohistochemistry analysis of paraffin-embedded human ovary carcinoma (A), kidney carcinoma (B), lung carcinoma (C) and breast carcinoma (D), showing cytoplasmic and membrane localization with DAB staining using CD166 Monoclonal antibody.

Storage

-20°C for one year