

## CD2 Monoclonal Antibody(3F3)

### Description

<b>Product type</b>	Primary Antibody
<b>Code</b>	BT-MCA0284
<b>Host</b>	Mouse
<b>Isotype</b>	IgG
<b>Size</b>	20ul, 50ul, 100ul
<b>Immunogen</b>	Synthetic Peptide of CD2
<b>Mol wt</b>	39448
<b>Species reactivity</b>	Human,Mouse,Rat
<b>Clonality</b>	Monoclonal
<b>Recommended application</b>	IHC-p, IF
<b>Concentration</b>	1 mg/ml
<b>Full name</b>	T-cell surface antigen CD2
<b>Synonyms</b>	CD2; SRBC; T-cell surface antigen CD2; Erythrocyte receptor; LFA-2; LFA-3 receptor; Rosette receptor; T-cell surface antigen T11; Leu-5; CD2

**This product is for research use only, not for use in human, therapeutic or diagnostic procedure.**

### Background

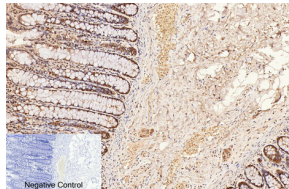
The protein encoded by this gene is a surface antigen found on all peripheral blood T-cells. The encoded protein interacts with LFA3 (CD58) on antigen presenting cells to optimize immune recognition. A locus control region (LCR) has been found in the 3' flanking sequence of this gene.

### Recommended Dilution

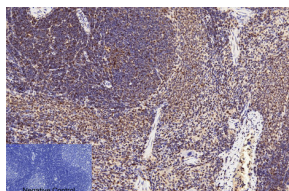
IHC: 1:200

Not yet tested in other applications.

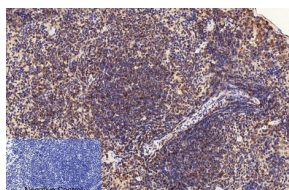
### Images



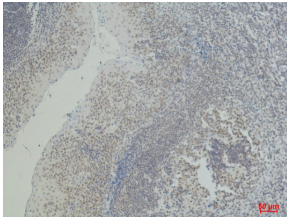
Immunohistochemical analysis of paraffin-embedded Human-colon tissue. 1.CD2 Monoclonal antibody(3F3) was diluted at 1:200(4°C,overnight). 2.Sodium citrate pH 6.0 was used for antibody retrieval(>98°C,20min). 3.Secondary antibody was diluted at 1:200(room temperature, 30min). Negative control was used by secondary antibody only.



Immunohistochemical analysis of paraffin-embedded Rat-spleen tissue. 1.CD2 Monoclonal antibody(3F3) was diluted at 1:200(4°C,overnight). 2.Sodium citrate pH 6.0 was used for antibody retrieval(>98°C,20min). 3.Secondary antibody was diluted at 1:200(room temperature, 30min). Negative control was used by secondary antibody only.



Immunohistochemical analysis of paraffin-embedded Mouse-spleen tissue. 1.CD2 Monoclonal antibody(3F3) was diluted at 1:200(4°C,overnight). 2.Sodium citrate pH 6.0 was used for antibody retrieval(>98°C,20min). 3.Secondary antibody was diluted at 1:200(room temperature, 30min). Negative control was used by secondary antibody only.



Immunohistochemical analysis of paraffin-embedded Human Tonsil Carcinoma using CD2 Mouse Monoclonal antibody diluted at 1:500.

### Storage

-20°C for one year

501 Changsheng S Rd, Nanhu Dist, Jiaxing, Zhejiang, China

Tel: 86 21 31007137 | E-mail: [save@bt-laboratory.com](mailto:save@bt-laboratory.com) | [www.bt-laboratory.com](http://www.bt-laboratory.com)