

CD20 Monoclonal Antibody

Description

Product type	Primary Antibody
Code	BT-MCA0285
Host	Mouse
Isotype	IgG
Size	50ul, 100ul
Immunogen	Synthetic peptide corresponding to aa (EPANPSEKNSPSTQY) of human CD20, conjugated to KLH.
Mol wt	N/A
Species reactivity	Human
Clonality	Monoclonal
Recommended application	IHC-p, IF, ICC, ELISA
Concentration	1 mg/ml
Full name	B-lymphocyte antigen CD20
Synonyms	MS4A1; CD20; B-lymphocyte antigen CD20; B-lymphocyte surface antigen B1; Bp35; Leukocyte surface antigen Leu-16; Membrane-spanning 4-domains subfamily A member 1; CD antigen CD20

This product is for research use only, not for use in human, therapeutic or diagnostic procedure.

Background

This gene encodes a member of the membrane-spanning 4A gene family. Members of this nascent protein family are characterized by common structural features and similar intron/exon splice boundaries and display unique expression patterns among hematopoietic cells and nonlymphoid tissues. This gene encodes a B-lymphocyte surface molecule which plays a role in the development and differentiation of B-cells into plasma cells. This family member is localized to 11q12, among a cluster of family members. Alternative splicing of this gene results in two transcript variants which encode the same protein.

Recommended Dilution

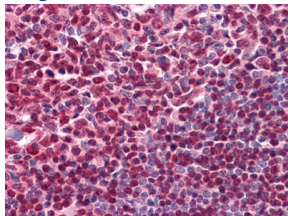
ELISA: 1:10000

IF: 1:200 - 1:1000

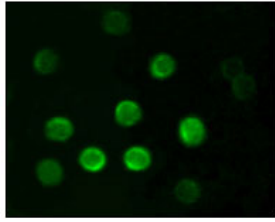
IHC: 1:200 - 1:1000

Not yet tested in other applications.

Images



Immunohistochemistry analysis of paraffin-embedded human Tonsil tissues with AEC staining using CD20 Monoclonal antibody.



Immunofluorescence analysis of B lymphocytes using CD20 Monoclonal antibody.

Storage

-20°C for one year

501 Changsheng S Rd, Nanhu Dist, Jiaxing, Zhejiang, China

Tel: 86 21 31007137 | E-mail: save@bt-laboratory.com | www.bt-laboratory.com