

CD23 Monoclonal Antibody

Description

Product type	Primary Antibody
Code	BT-MCA0288
Host	Mouse
Isotype	IgG
Size	50ul, 100ul
Immunogen	Purified recombinant fragment of human CD23 expressed in E. Coli.
Mol wt	N/A
Species reactivity	Human
Clonality	Monoclonal
Recommended application	FCM, ELISA
Concentration	1 mg/ml
Full name	Low affinity immunoglobulin epsilon Fc receptor
Synonyms	FCER2; CD23A; CLEC4J; FCE2; IGEBF; Low affinity immunoglobulin epsilon Fc receptor; BLAST-2; C-type lectin domain family 4 member J; Fc-epsilon-RII; Immunoglobulin E-binding factor; Lymphocyte IgE receptor; CD antigen CD23

This product is for research use only, not for use in human, therapeutic or diagnostic procedure.

Background

The protein encoded by this gene is a B-cell specific antigen, and a low-affinity receptor for IgE. It has essential roles in B cell growth and differentiation, and the regulation of IgE production. This protein also exists as a soluble secreted form, then functioning as a potent mitogenic growth factor. Alternatively spliced transcript variants encoding different isoforms have been described for this gene.

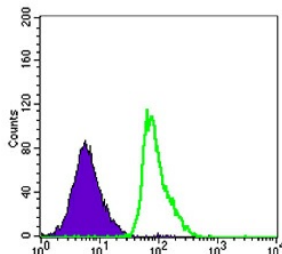
Recommended Dilution

ELISA: 1:10000

FC: 1:200 - 1:400

Not yet tested in other applications.

Images



Flow cytometric analysis of Raji cells using CD23 Monoclonal antibody (green) and negative control (purple).

Storage

-20°C for one year