

CD23 Monoclonal Antibody(10H2)

Description

Product type	Primary Antibody
Code	BT-MCA0289
Host	Mouse
Isotype	IgG
Size	20ul, 50ul, 100ul
Immunogen	Synthetic Peptide of CD23
Mol wt	36469
Species reactivity	Human,Mouse,Rat
Clonality	Monoclonal
Recommended application	WB
Concentration	1 mg/ml
Full name	Low affinity immunoglobulin epsilon Fc receptor
Synonyms	FCER2; CD23A; CLEC4J; FCE2; IGEBF; Low affinity immunoglobulin epsilon Fc receptor; BLAST-2; C-type lectin domain family 4 member J; Fc-epsilon-RII; Immunoglobulin E-binding factor; Lymphocyte IgE receptor; CD23

This product is for research use only, not for use in human, therapeutic or diagnostic procedure.

Background

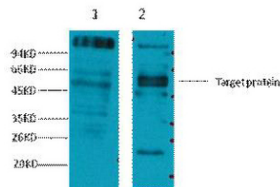
The protein encoded by this gene is a B-cell specific antigen, and a low-affinity receptor for IgE. It has essential roles in B cell growth and differentiation, and the regulation of IgE production. This protein also exists as a soluble secreted form, then functioning as a potent mitogenic growth factor. Alternatively spliced transcript variants encoding different isoforms have been described for this gene.

Recommended Dilution

WB: 1:1000

Not yet tested in other applications.

Images



Western blot analysis of 1) HeLa, 2) Mouse Brain tissue diluted at 1:2000.

Storage

-20°C for one year