

CD3E Monoclonal Antibody

Description

Product type	Primary Antibody
Code	BT-MCA0301
Host	Mouse
Isotype	IgG
Size	50ul, 100ul
Immunogen	Purified recombinant fragment of CD3E expressed in E. Coli.
Mol wt	N/A
Species reactivity	Human
Clonality	Monoclonal
Recommended application	WB, FCM, ELISA
Concentration	1 mg/ml
Full name	T-cell surface glycoprotein CD3 epsilon chain
Synonyms	CD3E; T3E; T-cell surface glycoprotein CD3 epsilon chain; T-cell surface antigen T3; Leu-4 epsilon chain; CD antigen CD3e

This product is for research use only, not for use in human, therapeutic or diagnostic procedure.

Background

The protein encoded by this gene is the CD3-epsilon polypeptide, which together with CD3-gamma, -delta and -zeta, and the T-cell receptor alpha/beta and gamma/delta heterodimers, forms the T-cell receptor-CD3 complex. This complex plays an important role in coupling antigen recognition to several intracellular signal-transduction pathways. The genes encoding the epsilon, gamma and delta polypeptides are located in the same cluster on chromosome 11. The epsilon polypeptide plays an essential role in T-cell development. Defects in this gene cause immunodeficiency. This gene has also been linked to a susceptibility to type I diabetes in women.

Recommended Dilution

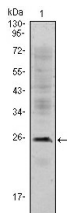
ELISA: 1:10000

FC: 1:200 - 1:400

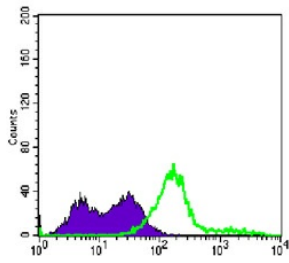
WB: 1:500 - 1:2000

Not yet tested in other applications.

Images



Western Blot analysis using CD3E Monoclonal antibody against Jurkat (1) cell lysate.



Flow cytometric analysis of Jurkat cells using CD3E Monoclonal antibody (green) and negative control (purple).

Storage

-20°C for one year

501 Changsheng S Rd, Nanhu Dist, Jiaxing, Zhejiang, China

Tel: 86 21 31007137 | E-mail: save@bt-laboratory.com | www.bt-laboratory.com