

CD5 Monoclonal Antibody(10G8)

Description

Product type	Primary Antibody
Code	BT-MCA0309
Host	Mouse
Isotype	IgG
Size	20ul, 50ul, 100ul
Immunogen	Synthetic Peptide of CD5
Mol wt	54625
Species reactivity	Human,Mouse,Rat
Clonality	Monoclonal
Recommended application	IHC-P, IF, ICC
Concentration	1 mg/ml
Full name	T-cell surface glycoprotein CD5
Synonyms	CD5; LEU1; T-cell surface glycoprotein CD5; Lymphocyte antigen T1; Leu-1; CD5

This product is for research use only, not for use in human, therapeutic or diagnostic procedure.

Background

May act as a receptor in regulating T-cell proliferation. CD5 interacts with CD72/LYB-2.,similarity:Contains 3 SRCR domains.,

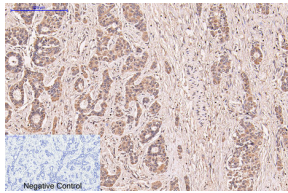
Recommended Dilution

IF: 1:50-200

WB: 1:200

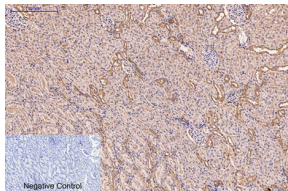
Not yet tested in other applications.

Images



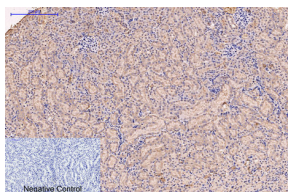
Immunohistochemical analysis of paraffin-embedded Human-liver-cancer tissue. 1.CD5 Monoclonal antibody(10G8) was diluted at 1:200(4°C,overnight). 2.Sodium citrate pH 6.0 was used for antibody retrieval(>98°C,20min). 3.Secondary antibody was diluted at 1:200(room temperature, 30min).

Negative control was used by secondary antibody only.



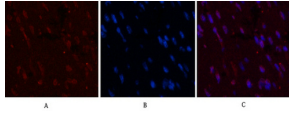
Immunohistochemical analysis of paraffin-embedded Rat-kidney tissue. 1.CD5 Monoclonal antibody(10G8) was diluted at 1:200(4°C,overnight). 2.Sodium citrate pH 6.0 was used for antibody retrieval(>98°C,20min). 3.Secondary antibody was diluted at 1:200(room temperature, 30min).

Negative control was used by secondary antibody only.

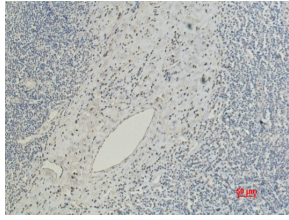


Immunohistochemical analysis of paraffin-embedded Mouse-kidney tissue. 1.CD5 Monoclonal antibody(10G8) was diluted at 1:200(4°C,overnight). 2.Sodium citrate pH 6.0 was used for antibody retrieval(>98°C,20min). 3.Secondary antibody was diluted at 1:200(room temperature, 30min).

Negative control was used by secondary antibody only.



Immunofluorescence analysis of Mouse-heart tissue. 1. CD5 Monoclonal antibody(10G8)(red) was diluted at 1:200(4°C, overnight). 2. Cy3 labeled Secondary antibody was diluted at 1:300(room temperature, 50min). 3. Picture B: DAPI(blue) 10min. Picture A: Target. Picture B: DAPI. Picture C: merge of A+B



Immunohistochemical analysis of paraffin-embedded Human Tonsil Carcinoma using CD5 Mouse Monoclonal antibody diluted at 1:200.

Storage

-20°C for one year

501 Changsheng S Rd, Nanhu Dist, Jiaxing, Zhejiang, China

Tel: 86 21 31007137 | E-mail: save@bt-laboratory.com | www.bt-laboratory.com