

CD8 Monoclonal Antibody

Description

Product type	Primary Antibody
Code	BT-MCA0317
Host	Mouse
Isotype	IgG
Size	50ul, 100ul
Immunogen	Purified recombinant fragment of human CD8 expressed in E. Coli.
Mol wt	N/A
Species reactivity	Human
Clonality	Monoclonal
Recommended application	FCM, ELISA
Concentration	1 mg/ml
Full name	T-cell surface glycoprotein CD8 alpha chain
Synonyms	CD8A; MAL; T-cell surface glycoprotein CD8 alpha chain; T-lymphocyte differentiation antigen T8; Leu-2; CD antigen CD8a

This product is for research use only, not for use in human, therapeutic or diagnostic procedure.

Background

The CD8 antigen is a cell surface glycoprotein found on most cytotoxic T lymphocytes that mediates efficient cell-cell interactions within the immune system. The CD8 antigen acts as a coreceptor with the T-cell receptor on the T lymphocyte to recognize antigens displayed by an antigen presenting cell in the context of class I MHC molecules. The coreceptor functions as either a homodimer composed of two alpha chains or as a heterodimer composed of one alpha and one beta chain. Both alpha and beta chains share significant homology to immunoglobulin variable light chains. This gene encodes the CD8 alpha chain. Multiple transcript variants encoding different isoforms have been found for this gene.

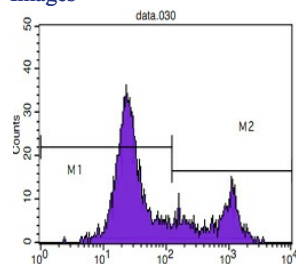
Recommended Dilution

ELISA: 1:10000

FC: 1:200 - 1:400

Not yet tested in other applications.

Images



Flow cytometric analysis of blood T cells using CD8 Monoclonal antibody (M2) and negative control (M1).

Storage

-20°C for one year

