

Cdk5 Monoclonal Antibody

Description

Product type	Primary Antibody
Code	BT-MCA0331
Host	Mouse
Isotype	IgG
Size	50ul, 100ul
Immunogen	Purified recombinant fragment of human Cdk5 expressed in E. Coli.
Mol wt	N/A
Species reactivity	Human,Rat,Monkey
Clonality	Monoclonal
Recommended application	WB, IHC-p, IF, ICC, FCM, ELISA
Concentration	1 mg/ml
Full name	Cell division protein kinase 5
Synonyms	CDK5; CDKN5; Cyclin-dependent kinase 5; Cell division protein kinase 5; Serine; threonine-protein kinase PSSALRE; Tau protein kinase II catalytic subunit; TPKII catalytic subunit

This product is for research use only, not for use in human, therapeutic or diagnostic procedure.

Background

This gene encodes a proline-directed serine/threonine kinase that is a member of the cyclin-dependent kinase family of proteins. Unlike other members of the family, the protein encoded by this gene does not directly control cell cycle regulation. Instead the protein, which is predominantly expressed at high levels in mammalian postmitotic central nervous system neurons, functions in diverse processes such as synaptic plasticity and neuronal migration through phosphorylation of proteins required for cytoskeletal organization, endocytosis and exocytosis, and apoptosis. In humans, an allelic variant of the gene that results in undetectable levels of the protein has been associated with lethal autosomal recessive lissencephaly-7. Alternative splicing results in multiple transcript variants.

Recommended Dilution

FC: 1:200 - 1:400

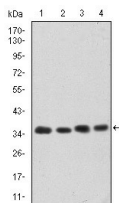
IF: 1:200 - 1:1000

IHC: 1:200 - 1:1000

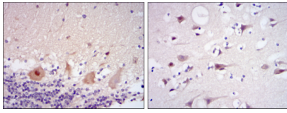
WB: 1:500 - 1:2000

Not yet tested in other applications.

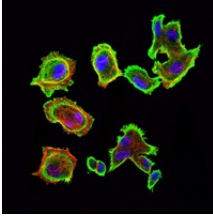
Images



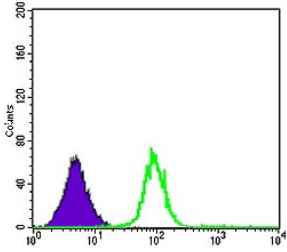
Western Blot analysis using Cdk5 Monoclonal antibody against HeLa (1) K562 (2) PC-12 (3) and Cos7 (4) cell lysate.



Immunohistochemistry analysis of paraffin-embedded cerebellum tissues (left) and brain tissues (right) with DAB staining using Cdk5 Monoclonal antibody.



Immunofluorescence analysis of GC7901 cells using Cdk5 Monoclonal antibody (green). Blue: DRAQ5 fluorescent DNA dye. Red: Actin filaments have been labeled with Alexa Fluor-555 phalloidin.



Flow cytometric analysis of K562 cells using Cdk5 Monoclonal antibody (green) and negative control (purple).

Storage

-20°C for one year

501 Changsheng S Rd, Nanhu Dist, Jiaxing, Zhejiang, China

Tel: 86 21 31007137 | E-mail: save@bt-laboratory.com | www.bt-laboratory.com