

Cerberus Monoclonal Antibody

Description

| | |
|--------------------------------|---|
| Product type | Primary Antibody |
| Code | BT-MCA0335 |
| Host | Mouse |
| Isotype | IgG |
| Size | 50ul, 100ul |
| Immunogen | Purified recombinant fragment of human Cerberus expressed in E. Coli. |
| Mol wt | N/A |
| Species reactivity | Human |
| Clonality | Monoclonal |
| Recommended application | WB, IHC-p, IF, ELISA |
| Concentration | 1 mg/ml |
| Full name | Cerberus |
| Synonyms | CER1; DAND4; Cerberus; Cerberus-related protein; DAN domain family member 4 |

This product is for research use only, not for use in human, therapeutic or diagnostic procedure.

Background

This gene encodes a cytokine member of the cysteine knot superfamily, characterized by nine conserved cysteines and a cysteine knot region. The cerberus-related cytokines, together with Dan and DRM/Gremlin, represent a group of bone morphogenetic protein (BMP) antagonists that can bind directly to BMPs and inhibit their activity.

Recommended Dilution

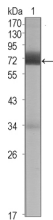
ELISA: 1:10000

IHC: 1:200 - 1:1000

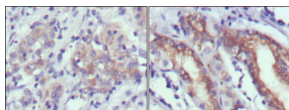
WB: 1:500 - 1:2000

Not yet tested in other applications.

Images



Western Blot analysis using Cerberus Monoclonal antibody against CER1 (aa18-267)-hlgGfc transfected HEK293 cell lysate (1).



Immunohistochemistry analysis of paraffin-embedded human gastric cancer (left) and normal gastric tissues (right) with DAB staining using Cerberus Monoclonal antibody.

Storage

-20°C for one year