

CHRDL1 Monoclonal Antibody

Description

Product type	Primary Antibody
Code	BT-MCA0341
Host	Mouse
Isotype	IgG
Size	50ul, 100ul
Immunogen	Purified recombinant human CHRDL1 protein fragments expressed in E.coli.
Mol wt	N/A
Species reactivity	Human,Rat
Clonality	Monoclonal
Recommended application	WB
Concentration	1 mg/ml
Full name	Chordin-like protein 1
Synonyms	CHRDL1; NRLN1; Chordin-like protein 1; Neuralin-1; Neurogenesis-1; Ventroptin

This product is for research use only, not for use in human, therapeutic or diagnostic procedure.

Background

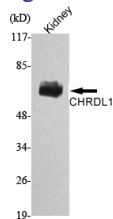
This gene encodes an antagonist of bone morphogenetic protein 4. The encoded protein may play a role in topographic retinotectal projection and in the regulation of retinal angiogenesis in response to hypoxia. Alternatively spliced transcript variants encoding different isoforms have been described.

Recommended Dilution

WB: 1:1000 - 1:2000

Not yet tested in other applications.

Images



Western Blot analysis using CHRDL1 Monoclonal antibody against rat kidney lysate.

Storage

-20°C for one year

501 Changsheng S Rd, Nanhu Dist, Jiaxing, Zhejiang, China

Tel: 86 21 31007137 | E-mail: save@bt-laboratory.com | www.bt-laboratory.com