

CIB1 Monoclonal Antibody

Description

Product type	Primary Antibody
Code	BT-MCA0342
Host	Mouse
Isotype	IgG
Size	50ul, 100ul
Immunogen	Purified recombinant fragment of CIB1 expressed in E. Coli.
Mol wt	N/A
Species reactivity	Human
Clonality	Monoclonal
Recommended application	WB, IHC-p, IF, ELISA
Concentration	1 mg/ml
Full name	Calcium and integrin-binding protein 1
Synonyms	CIB1; CIB; KIP; PRKDCIP; Calcium and integrin-binding protein 1; CIB; Calcium- and integrin-binding protein; CIBP; Calmyrin; DNA-PKcs-interacting protein; Kinase-interacting protein; KIP; SNK-interacting protein 2-28; SIP2-28

This product is for research use only, not for use in human, therapeutic or diagnostic procedure.

Background

This gene encodes a member of the EF-hand domain-containing calcium-binding superfamily. The encoded protein interacts with many other proteins, including the platelet integrin alpha-IIb-beta-3, DNA-dependent protein kinase, presenilin-2, focal adhesion kinase, p21 activated kinase, and protein kinase D. The encoded protein may be involved in cell survival and proliferation, and is associated with several disease states including cancer and Alzheimer's disease. Alternative splicing results in multiple transcript variants.

Recommended Dilution

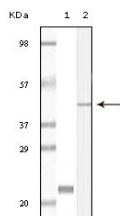
ELISA: 1:10000

IHC: 1:200 - 1:1000

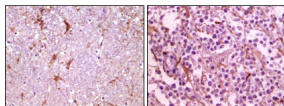
WB: 1:500 - 1:2000

Not yet tested in other applications.

Images



Western Blot analysis using CIB1 Monoclonal antibody against truncated CIB1 recombinant protein (1) and A431 cell lysate (2).



Immunohistochemistry analysis of paraffin-embedded human thalamus (left) and glioma (right) tissue, showing membrane localization with DAB staining using CIB1 Monoclonal antibody.

Storage

-20°C for one year

