

Cleaved PARP Monoclonal Antibody(M4)

Description

Product type	Primary Antibody
Code	BT-MCA0346
Host	Mouse
Isotype	IgG
Size	20ul, 50ul, 100ul
Immunogen	Synthetic Peptide of Cleaved PARP
Mol wt	N/A
Species reactivity	Human
Clonality	Monoclonal
Recommended application	WB
Concentration	1 mg/ml
Full name	Poly (ADP-ribose) polymerase 1
Synonyms	PARP1; ADPRT; PPOL; Poly (ADP-ribose) polymerase 1; PARP-1; ADP-ribosyltransferase diphtheria toxin-like 1; ARTD1; NAD(+) ADP-ribosyltransferase 1; ADPRT 1; Poly(ADP-ribose) synthase 1

This product is for research use only, not for use in human, therapeutic or diagnostic procedure.

Background

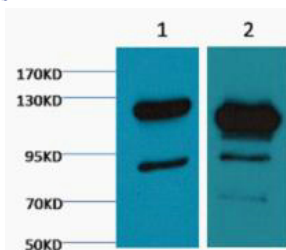
This gene encodes a chromatin-associated enzyme, poly(ADP-ribose)transferase, which modifies various nuclear proteins by poly(ADP-ribose)ylation. The modification is dependent on DNA and is involved in the regulation of various important cellular processes such as differentiation, proliferation, and tumor transformation and also in the regulation of the molecular events involved in the recovery of cell from DNA damage. In addition, this enzyme may be the site of mutation in Fanconi anemia, and may participate in the pathophysiology of type I diabetes.

Recommended Dilution

WB: 1:1000-3000

Not yet tested in other applications.

Images



Western blot analysis of 1) Jurkat, 2) Hela diluted at 1:2000.

Storage

-20°C for one year