

## Collagen II mouse Monoclonal Antibody(1H1)

### Description

<b>Product type</b>	Primary Antibody
<b>Code</b>	BT-MCA0355
<b>Host</b>	Mouse
<b>Isotype</b>	IgG
<b>Size</b>	20ul, 50ul, 100ul
<b>Immunogen</b>	Synthetic Peptide of Collagen II
<b>Mol wt</b>	N/A
<b>Species reactivity</b>	Human,Mouse,Rat
<b>Clonality</b>	Monoclonal
<b>Recommended application</b>	IHC-p, IF
<b>Concentration</b>	1 mg/ml
<b>Full name</b>	Collagen alpha-1(II) chain
<b>Synonyms</b>	Collagen alpha-1(II) chain; Alpha-1 type II collagen

This product is for research use only, not for use in human, therapeutic or diagnostic procedure.

### Background

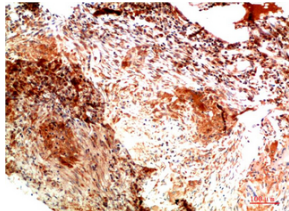
This gene encodes the alpha-1 chain of type II collagen, a fibrillar collagen found in cartilage and the vitreous humor of the eye. Mutations in this gene are associated with achondrogenesis, chondrodysplasia, early onset familial osteoarthritis, SED congenita, Langer-Saldino achondrogenesis, Kniest dysplasia, Stickler syndrome type I, and spondyloepimetaphyseal dysplasia Strudwick type. In addition, defects in processing chondrocalcin, a calcium binding protein that is the C-propeptide of this collagen molecule, are also associated with chondrodysplasia. There are two transcripts identified for this gene.

### Recommended Dilution

IHC-p: 1:50-300

Not yet tested in other applications.

### Images



Immunohistochemical analysis of paraffin-embedded Human Lung Carcinoma Tissue using Collagen II Mouse Monoclonal antibody diluted at 1:200

### Storage

-20°C for one year