

Collagen II mouse Monoclonal Antibody(8F6)

Description

Product type	Primary Antibody
Code	BT-MCA0357
Host	Mouse
Isotype	IgG
Size	20ul, 50ul, 100ul
Immunogen	Synthetic Peptide of Collagen II
Mol wt	N/A
Species reactivity	Human, Mouse, Rat
Clonality	Monoclonal
Recommended application	IHC-p, IF
Concentration	1 mg/ml
Full name	Collagen alpha-1(II) chain
Synonyms	Collagen alpha-1(II) chain; Alpha-1 type II collagen

This product is for research use only, not for use in human, therapeutic or diagnostic procedure.

Background

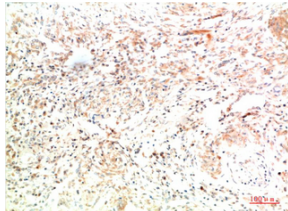
This gene encodes the alpha-1 chain of type II collagen, a fibrillar collagen found in cartilage and the vitreous humor of the eye. Mutations in this gene are associated with achondrogenesis, chondrodysplasia, early onset familial osteoarthritis, SED congenita, Langer-Saldino achondrogenesis, Kniest dysplasia, Stickler syndrome type I, and spondyloepimetaphyseal dysplasia Strudwick type. In addition, defects in processing chondrocalcin, a calcium binding protein that is the C-propeptide of this collagen molecule, are also associated with chondrodysplasia. There are two transcripts identified for this gene.

Recommended Dilution

IHC-p: 1:50-300

Not yet tested in other applications.

Images



Immunohistochemical analysis of paraffin-embedded Human Lung Carcinoma Tissue using Collagen II Mouse Monoclonal antibody diluted at 1:200

Storage

-20°C for one year